



## EZ ORDER CATALOG







This entire kitchen can be built with the Funtime EZ Order Catalog.

## WELCOME

Welcome to the Funtime Cabinet Factory EZ Order Catalog. Funtime Cabinet Factory has streamlined the custom cabinet process into a simple ordering system available in print or online.

The goal of the EZ Order Catalog is to provide access for home owners and contractors to Funtime's high-quality product lines and materials with cost savings. This step-by-step guide will explain the basics of cabinetry construction and the proper way to order to ensure every job is complete.

All of our cabinets are constructed with a Blind Mortise method\* (see footnote). All of our cabinet parts are  $\frac{3}{4}$ " thick, including the backs and all hardware is Blum® soft close. We do not cut the corners on quality by purchasing material made in China. Instead, we source the highest-quality materials that we can find and offer it to you at a discounted rate.

In order to understand our system, be aware that all cabinets are offered at the exact dimension you desire. Any width, depth and height you require is available. We offer standard cabinetry, integrated finger pulls for vanities and kitchens, as well as floating bathroom vanities. No need for 3" increments, no more large fillers and no more poor-quality materials. You can now order modern and contemporary cabinets, made with Italian and Canadian materials and German hardware all at a fraction of the cost.

We are excited to show you what we have to offer.

*\*A Blind Mortise is where a side of a cabinet has a slot cut into the panel at the bottom, top and back. Then, the bottom, back and top are cut long, and the end is cut into a long tab to perfectly fit into this slot. It is an old-fashioned way of woodworking which can now can be achieved with the help of robotic cutting machines.*



TABLE OF CONTENTS



UNDERSTANDING THE BASICS

▷ FILLERS	6 - 7
▷ INSIDE CORNER FILLERS	8 - 9
▷ FINISHED END PANELS	10 - 11
▷ TOE KICKS & PLATFORMS	12 - 13
▷ FLAT CROWN	14 - 15
▷ LED LIGHTING SKINS	16 - 17
▷ INTEGRATED FINGER PULLS	18 - 19

HOW TO ORDER

▷ STEPS 1-4	20 - 21
-------------	---------

MATERIALS & FINISHES

▷ ALL CABINETRY MATERIALS	22 - 32
▷ INTERIOR MATERIAL OPTIONS	33
▷ FINGER PULL FINISHES, PARTS & PCS	34 - 35

EZ ORDER PRODUCTS

BASE CABINETRY	36 - 39	PARTS & PIECES	60 - 64
BASE FINGER PULLS	40 - 41	FINGER PULL PARTS	
WALL CABINETRY	42 - 43	FLAT CROWN	
TALL CABINETRY	44 - 47	TOE KICKS & PLATFORMS	
ALL VANITIES	48 - 55	FILLERS	
FLOATING VANITIES	52 - 53	FINISHED ENDS	
FINGER PULL VANITIES	54	LED LIGHTING SKINS	
FLOATING FINGER PULL VANITIES	55	<b>EZ GLOSSARY</b>	65 - 67
CLOSETS	56 - 59	ALL PRODUCT DESCRIPTIONS LOCATED IN THE BACK OF THE CATALOG	







FILLERS

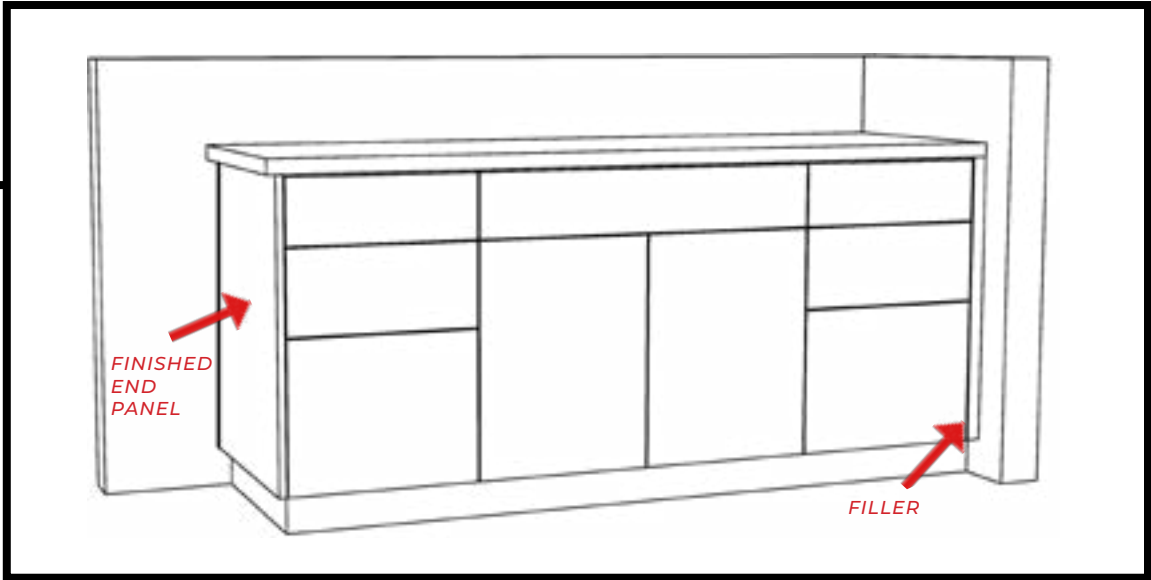
Cabinetry is built very square and accurate, however, homes are not. Therefore, using a *FILLER* is a key component to a successful installation.

*FILLERS* also allow the space for a drawer or door to open when placed against a wall. A *FILLER* is required wherever cabinetry will touch a wall. In this case, a *FILLER* is required where the cabinet touches the wall.

Funtime's *FILLERS* are cut at 2 1/4" wide, leaving an extra 3/4" for scribe. Scribe is used in a case where the wall is severely out of plumb. Shown below & on the opposite page is an example of a *FILLER* on a bathroom vanity.

Notice at the opposite end is a *FINISHED END PANEL*.  
(see page 10 for more information on *FINISHED END PANELS*).

**IMPORTANT NOTE:** On the EZ Order Form you will need to assign the *FILLER* to the proper cabinet and specify if it's placement (right or left).



**Helpful Hints:** The left side of this cabinet will require a *FINISHED END PANEL* (see page 63). This panel **MUST** be ordered separately. *FINISHED END PANELS* are ordered 1/2" deeper so that they can be trimmed onsite if the wall is not perfectly plumb. This is normal to order larger than needed on the side that has a filler. The red arrow on the right indicates the filler (see above).



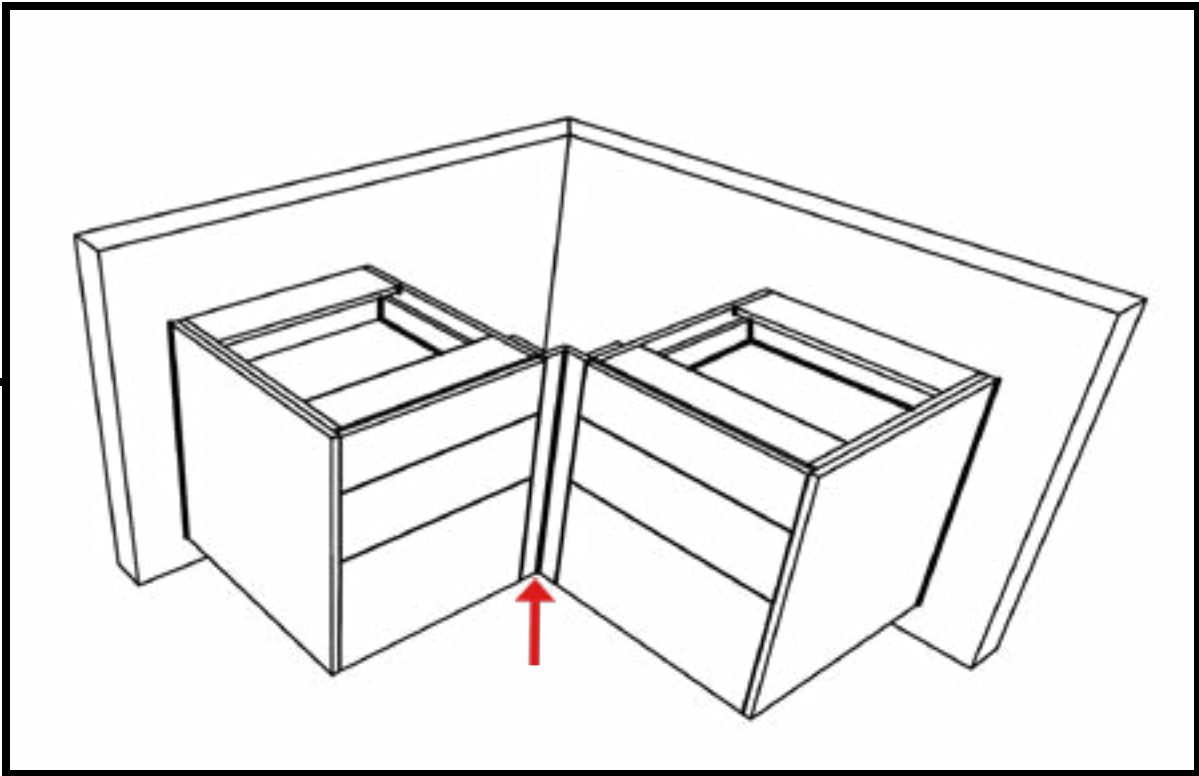
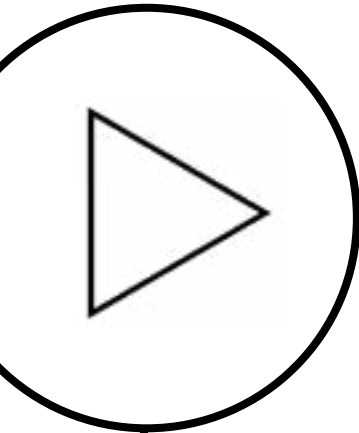
Notice the *FILLER* located on the far right adjacent to the wall.



INSIDE CORNER FILLERS

When two cabinets on adjacent walls meet, the filler must be ordered as an *INSIDE CORNER FILLER*.

This *INSIDE CORNER FILLER* will be programmed to be cut at 3" wide so that it can be installed at 2 ¼" showing. This will allow drawers to open and clear other cabinet handles, dishwasher handles and other hardware.



**Helpful Hints:** Range handles extend further out than dishwasher handles. If the drawer opens close to a range, the inside corner filler may need be to ordered at a wider size to ensure that there is enough space to clear the range handle.

→ The red arrow above indicates the inside corner filler.



Notice the *INSIDE CORNER FILLERS* located to the left of the microwave.



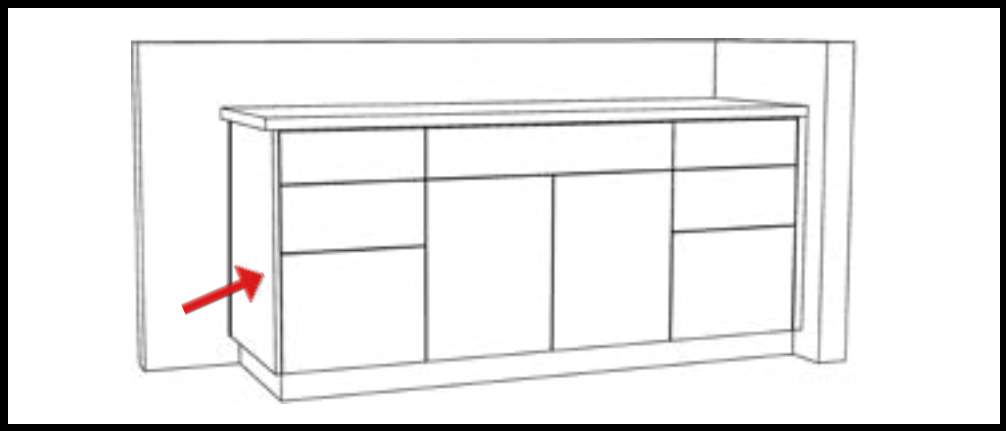
FINISHED END PANELS

Whenever the end of a cabinet is exposed a *FINISHED END PANEL* will be required. *FINISHED END PANELS* must be included in the overall width of the cabinet and automatically include an additional 1/2" of depth to scribe to the wall. *FINISHED END PANELS* are meant to finish at the face of the doors and drawer fronts.

**IMPORTANT NOTE:** *On the EZ Order Form you will need to assign the FINISHED END PANEL to the proper cabinet and specify if it's placement (right or left).*

**EXAMPLE:**  
*Your base cabinet is 24" deep, the door and drawer fronts add 7/8" onto the depth.*

**Your Finished End Panel will be ordered as follows:**  
*24" + 7/8" + 1/2" (for scribe at the wall) = 25 3/8" (depth of the Finished End Panel).*



**Helpful Hint #1:** Notice on the left side of this cabinet we have a finished end panel. **This panel MUST be ordered separately.** We order the finished end panel 1/2" deeper so it can be trimmed onsite if the wall is not perfectly plumb.

**Helpful Hint #2:** If your job has a 36" wide wall (upper) cabinet, the finished end panel will add 3/4" to the overall width of that single cabinet. Reduce the width of that single cabinet, or plan on it being installed at 36 3/4". The red arrow above indicates the finished end panel.



Here is an example of a FINISHED END PANEL on Floating Finger Pull Vanity cabinetry.



TOE KICKS & PLATFORMS

When installing a peninsula or an island, a *PLATFORM TOE KICK* is always recommended. A *PLATFORM TOE KICK* is a 3 3/4" tall box made for peninsula walls or islands. Shimming is required to level to 4".

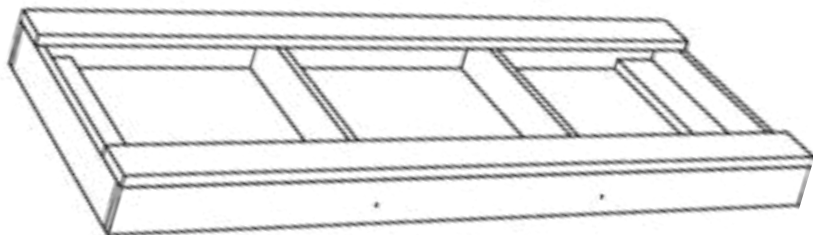
The exposed faces of the *PLATFORM* must be wrapped with finished *TOE KICK* material. The *PLATFORM* needs to be ordered at the proper size (see how to calculate the platform size below). Once installed you will be adding an additional 3/4" thick finished toe-kick on all sides. If there is an appliance in the island, please refer to the notes in red below.

ISLAND WITH APPLIANCE

If your island has an appliance then there is no platform required for the appliance space. Therefore, two platforms will need to be ordered (one platform for each side of the appliance). For example: if your island is 72"W and has a 24"W appliance in the middle then two platforms will need to be ordered. Each platform would be ordered at 20"W. Refer to the following calculations: 72"W island - 24" appliance (assuming appliance is in the center of the island). This leaves a 24" of cabinet space on the left and right side of your appliance. Thus, your platform will be ordered 4" more narrow than the cabinet. Each platform would be ordered at 20"W x 28"D.

ISLAND WITHOUT APPLIANCE

- The proper platform size can be calculated as follows:
1. Measure the finished exterior dimension of your island.
  2. Reduce all sides by 4".
  3. Example: The island measures 36" by 72". The platform at will be ordered at 28" by 64".



**Helpful Hint #1:** All finished toe kicks are ordered in 95" lengths. Platforms are ordered in any size needed (up to 95" long for each platform).

**Helpful Hint #2:** If there is an appliance located within your island then two separate platforms must be ordered (one for each side of the appliance).



This is an example of a platform underneath an island.



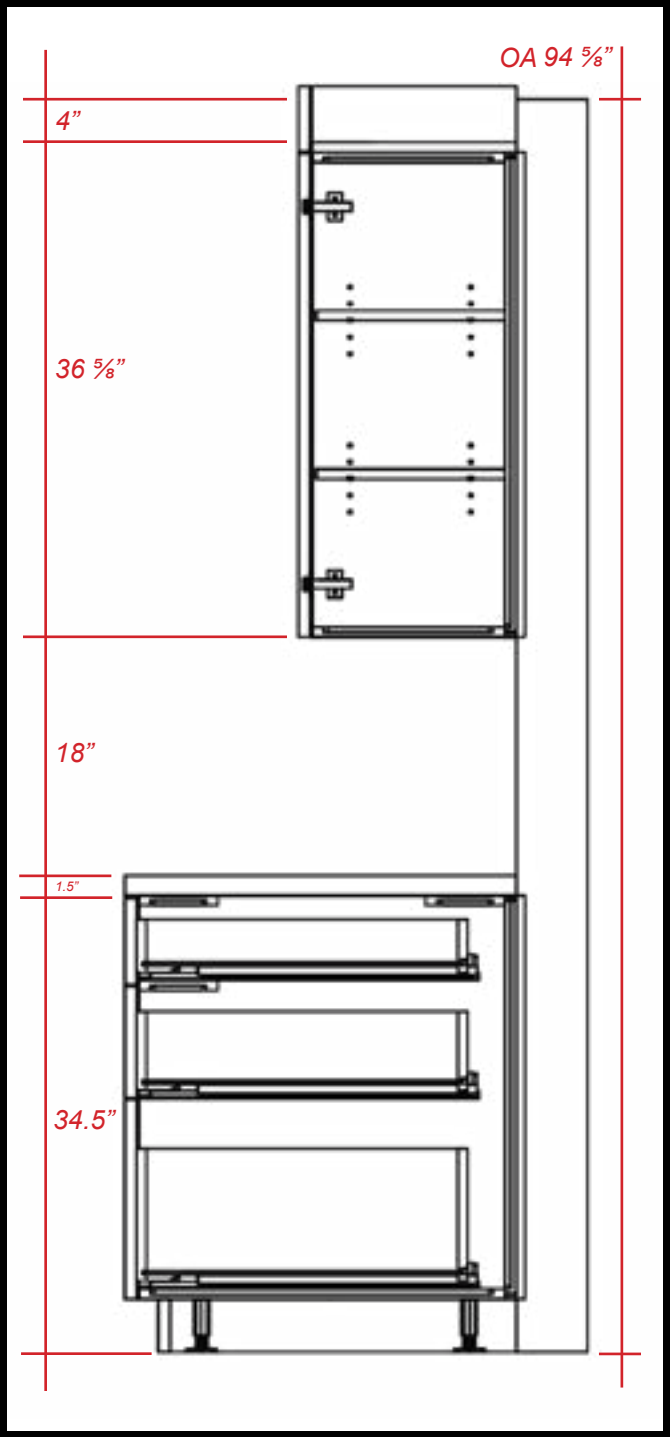
FLAT CROWN

FLAT CROWN is used at the top of tall and wall (upper) cabinets where they meet with the ceiling. Funtime's default flat crown height is 4". When ordering wall and base cabinetry we recommend using the wall (upper) cabinet height to determine the proper heights of flat crown.

FLAT CROWN is ordered 1" taller than required to scribe into the ceiling.

In this example (right) there is a ceiling height of 94 5/8". The base will finish at 36" using a 1 1/2" thick countertop finished height (standard). We have included 18" for the space between the countertop and the bottom of the wall (upper) cabinets. This will equal to a 4" tall FLAT CROWN. This example shows that with a 4" FLAT CROWN the remainder wall cabinets height will be ordered at 36 5/8" tall.

We calculated these numbers as follows (see example on right):  
94 5/8" - 36" - 18" - 4" = 36 5/8"



Section drawing explaining calculations.



- Helpful Hint #1: Flat crown is ordered in full length cuts at 95".
- Helpful Hint #2: If the project requires having 2" for FLAT CROWN, then the wall cabinets MUST BE ordered at 38 5/8".



LED LIGHTING SKINS

UNDER MOUNTED CABINET LIGHTING

Funtime Cabinet Factory provides the option of adding **LED LIGHTING SKINS** to your wall cabinets, which creates a clean finish on the bottom of your upper cabinetry and are ordered in lengths of 95". This **LED LIGHT SKIN** has a light rail attached to the face of the skin. This skin creates a space between the bottom of the uppers so you can hide the wiring, which feeds your lighting and also acts as a finger pull.

Funtime will ensure that the cabinetry is prepared properly to accept the light rail and the skin. When **LED LIGHTING SKINS** have been added, the finished ends should be ordered at the same height of the overall cabinet.

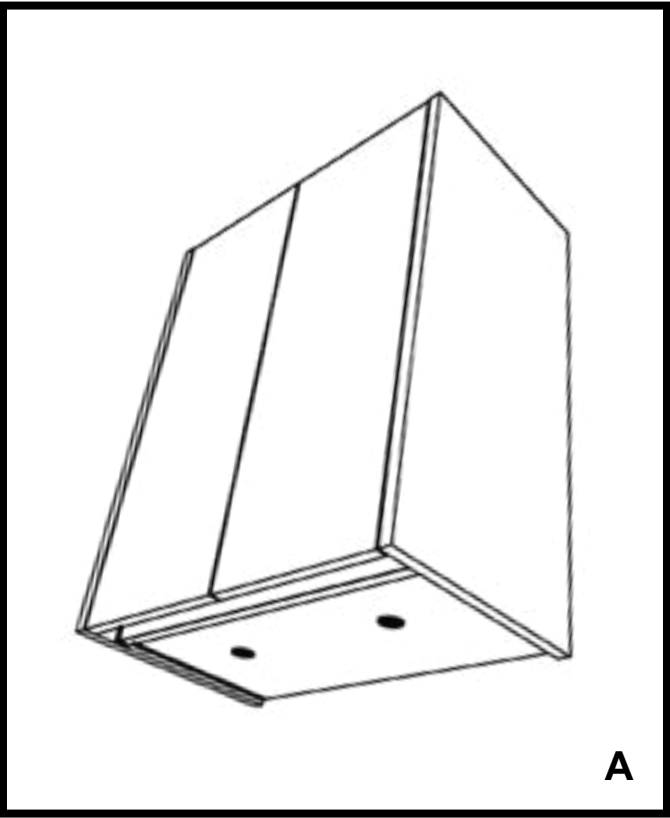
For example, if you order a 36" tall upper and decide to add an **LED LIGHT SKIN** you MUST also order the finished ends at 36" tall. Do NOT reduce the height of your end panels by the height of the LED light skin and rail.

Notice you also have a space between the back of the doors and the face of the light rail to act as a finger pull so that the uppers do not require handles.

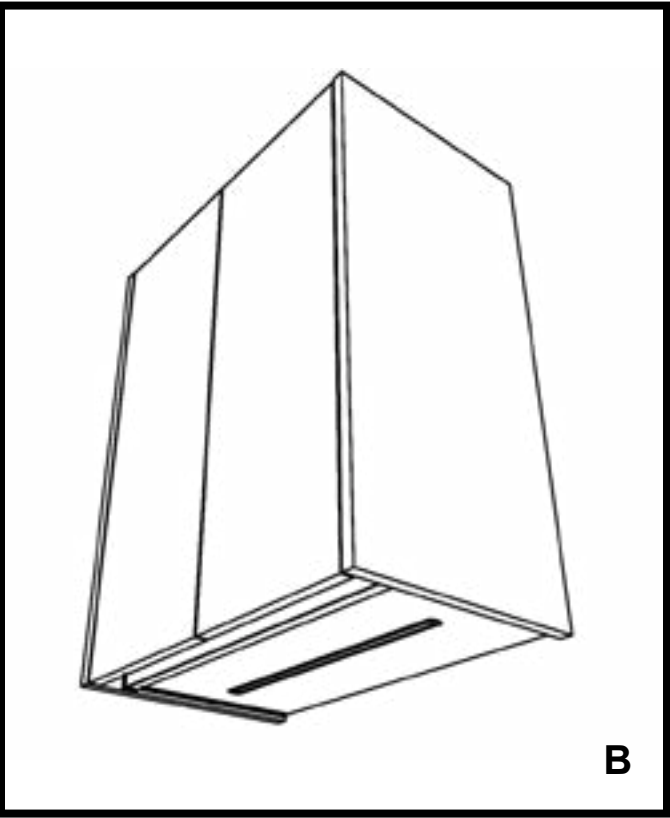
We automatically prepare the upper cabinet by shortening the body of the cabinet by 1 3/4" and leaving doors at the proper height.



This is an example of an LED LIGHTING SKIN mounted onto kitchen wall (upper) cabinetry.



A



B

- A. Example of LED Puck Light Skin on upper cabinet.
  - B. Example of LED Strip Light Skin on upper cabinet.
- LED Lighting Skins can be found on page 64.

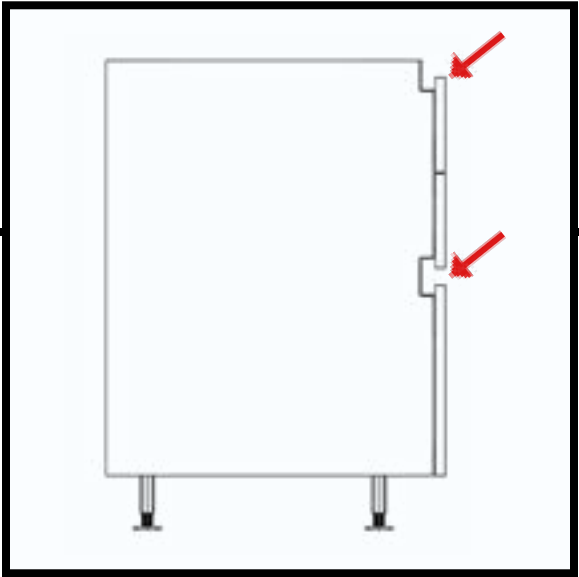


FINGER PULLS

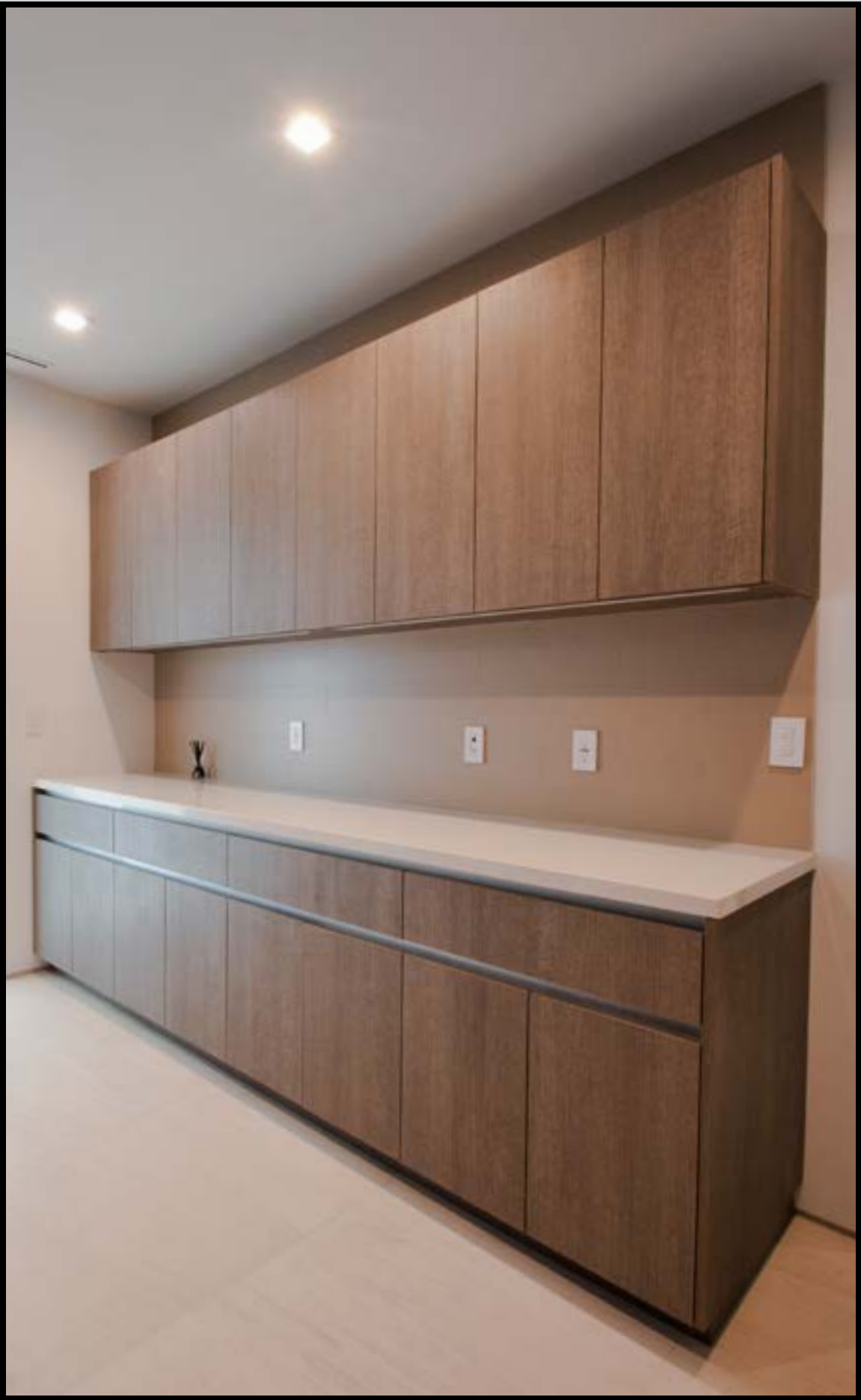
Clean up your design without any handles!  
By using our integrated *FINGER PULLS* you can avoid handles while adding a very clean modern touch to any room you desire! Add class and character by removing your handles and order your cabinets as '*FINGER PULL.*' This will enhance the simplistic design, plus add a European Modern touch.

If ordered from the *FINGER PULL* section, all of your base cabinetry will include *FINGER PULLS*.

Any upper cabinet can be ordered with an *LED LIGHT SKIN*, which creates the space for your fingers to open the upper cabinet (even when lighting is not required). When placing your order with the EZ Order Form, be sure to select from the *FINGER PULL* section (see pages 40-41 and 54-55 for all *FINGER PULL* products).



**Helpful Hint:** When placing your order with the EZ Order Form, be sure to select 'Finger Pull.'



In this example, notice the clean look of INTEGRATED FINGER PULLS.



# HOW TO ORDER

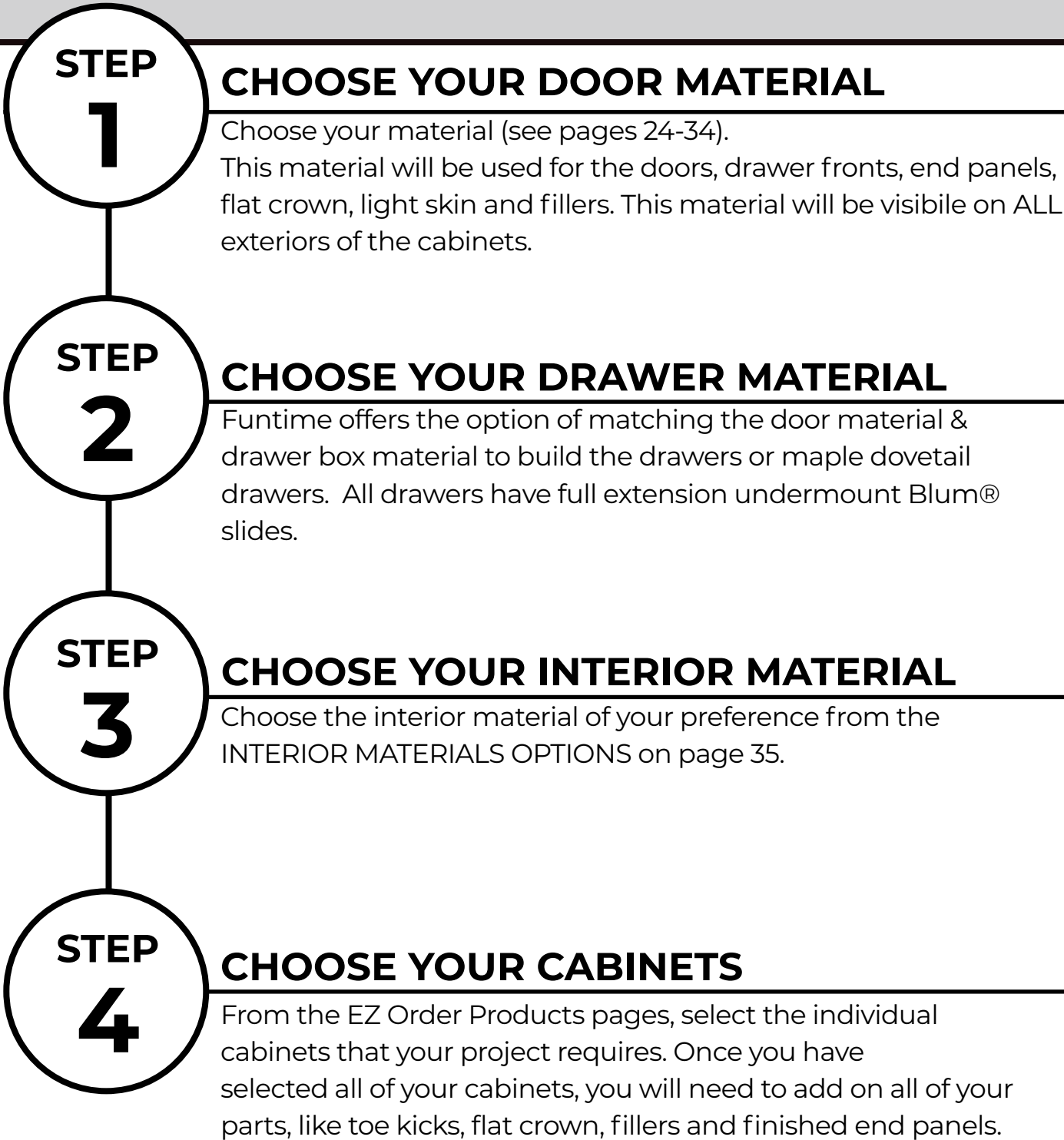
The following steps explain how to place an EZ Order for custom cabinetry.

PLEASE NOTE: Be aware that you DO NOT have the ability to order TWO different finishes on ONE order form.

If you have TWO different colors of cabinetry in a single room, you will need to place TWO separate orders.

**Order #1 = Material #1**  
**Order#2 = Material #2**

You can review all *FINISHES & MATERIALS* (pages 22-33) to make selections ahead of time so that the ordering process is easier.



*Once all steps have been completed, please send your order form to [info@funtimecabinetfactory.com](mailto:info@funtimecabinetfactory.com) and we will respond with a price within 24-48 hours. Once your order has been accepted and paid in full we will begin building your custom cabinetry.*



FINISHES & MATERIALS



4AE | ROBLE  
ETERNITY



5AE | NOGAL  
SLOW



16N | FRESNO  
GLACIAL



18N | FRESNO  
TAIGE



19N | FRESNO  
ESTEPA



74V | ROBLE  
STELLA



75V | ROBLE  
AZABACHE



84V | ROBLE  
DENVER



97V | ROBLE  
COLORADO



98V | ROBLE  
AURORA



FB64 | ERIS



FB65 | ORIONE

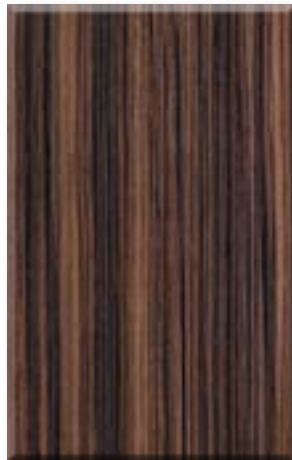
FINISHES & MATERIALS



FB66 | VERUNA



LG23 | EVOLVE



LK00 | MAKASSARO



LK44 | NOCE  
LEUCA



LK55 | PALISSANDRO



LK84 | OREGON  
PINE



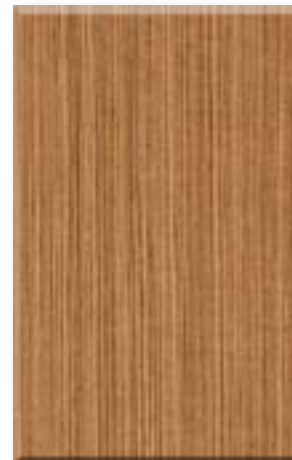
LK98 | ROVERE



LM08 | CARBONE



LM14 | BAMBOO



LM17 | NOCE  
DANIELLA



LM37 | STRATOS  
PINEA



LM60 | RIALTO



FINISHES & MATERIALS



LM63 | VINTAGE



LM67 | ASPEN OAK



LM69 | CITY OAK



LM95 | PALISSANDRO BLUE



LM96 | SANTOS WHITE



LM98 | PALISSANDRO WALNUT



LN26 | RUSTIC OAK



LN65 | BACKSTAGE



LR17 | BAGNOLA



LR18 | FIASCHERINO



LR19 | MARALUNGA



LR20 | PUGLIOLA

FINISHES & MATERIALS



LR22 | VALLEY



LR25 | ASCARI



LR26 | NUVOLARI



LR27 | ALBORETO



LR28 | PATRESE



LR29 | FITTIPALDI



LR30 | ANDRETTI



LR33 | ABBEY



LR65 | ACQUEDOTTI



LS13 | GIFFONI



LS14 | ACERNO



LS17 | MILANO



FINISHES & MATERIALS



LS41 | CALVANICO



LS43 | MONTORO



S002 | SNOWMAN



S006 | MUFFIN



S010 | PEBBLE BEACH



S012 | JAVA CHESTNUT



S013 | CYPRESS POINT



S027 | FRENCH GREY



S028 | LOUNGE BROWN



S032 | ACERO



S071 | TOASTED EXPRESSO



S072 | TUSCAN CYPRESS

FINISHES & MATERIALS



S120 | MIELE



S121 | NECKINGER



S122 | TYBURN



S129 | MOSELLE



S133 | MADRID



S134 | PRAGA



S137 | TOKYO



S145 | DANUBIO



S155 | CORSINI



S159 | TAITO



S160 | MEGURO



S162 | NAKANO



FINISHES & MATERIALS



U129 | NERO



12G | LINO  
CANCÚN



13G | LINO  
HABANA



70F | TESSUTO



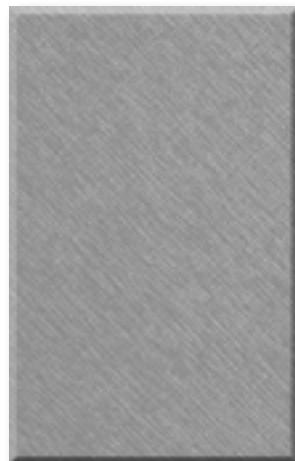
FA44 | KHA  
KI  
LINEN



FA46 | GUERRILLA



FA77 | COOL GRAY  
LINEN



FB81 | IRIDIO



FB83 | RUTENIO



FB86 | CURIO



B073  
LTHR | WHITE  
LEATHER



FA33 | MAYA BRONZE  
LIGHT

FINISHES & MATERIALS



UA92 | BEIGE  
LEATHER



UA94  
LTHR | VISION  
LEATHER



UB07 | ARENA  
LEATHER



UB09 | BRUN  
LEATHER



B011 | WHITE  
SCULTURA



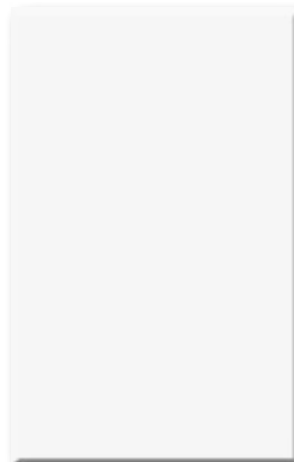
B073  
ARES | WHITE  
ARES



FB11 | ARES  
CONCRETE



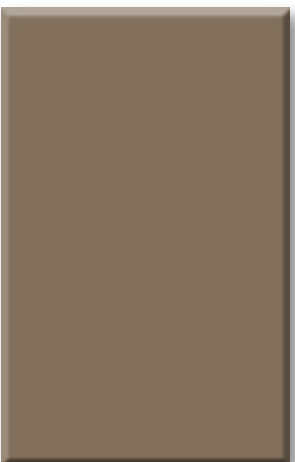
FB12 | SMOKY



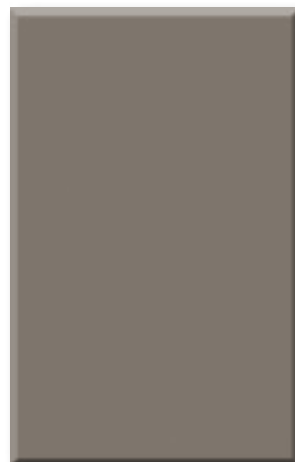
B073  
TALCO | TOTAL WHITE  
TALCO



U164 | AVORIO



UA80 | CORDA



UA94  
TALCO | VISION  
TALCO

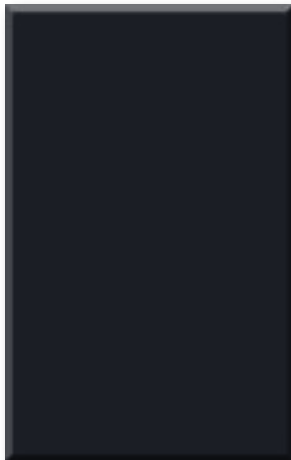




UB01 | CAFE  
TALCO



UB19 | GRIOGIO  
TALCO



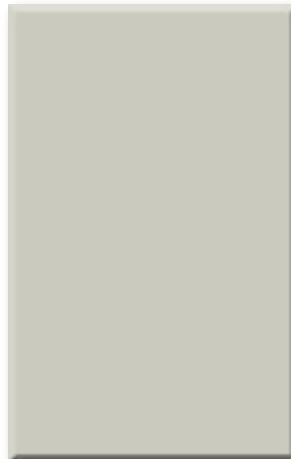
3010 | PEARL  
BLACK



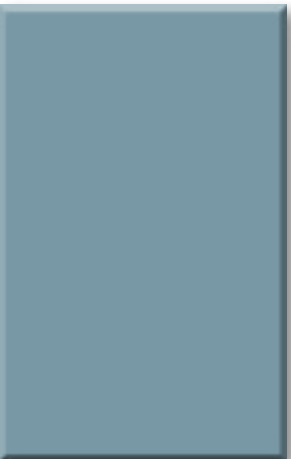
3011 | LONDON  
BLUES



3012 | SNOW  
WHITE



3013 | BREEZE  
BEIGE



3015 | MACARON  
GREEN



3017 | TIMELESS  
GREY



3021 | ICE GREY



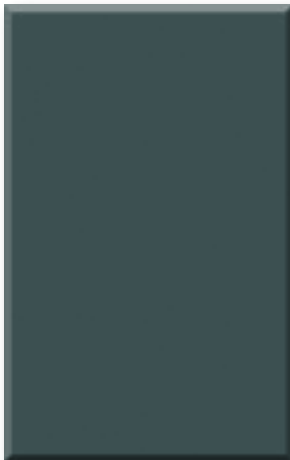
3022 | ROYAL  
GREY



3024 | PEBBLE  
GREY



3025 | BITTER



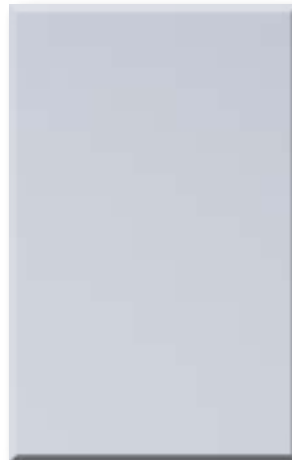
3027 | FOREST  
GREY



3029 | GLAMOROUS  
PACIFIC



MM1 | SUPER MATTE  
WHITE



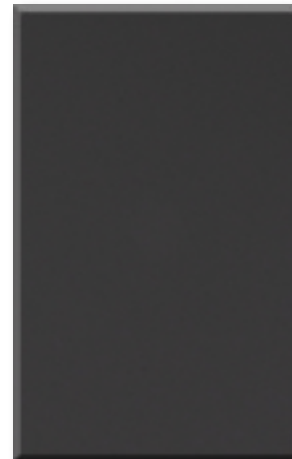
MM2 | SUPER MATTE  
LIGHT GREY



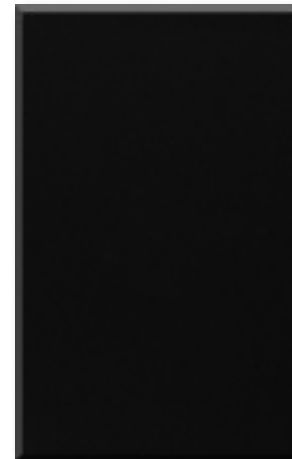
MM3 | SUPER MATTE  
TAN



MM4 | SUPER MATTE  
DARK GREY



MM5 | SUPER MATTE  
GRAPHITE



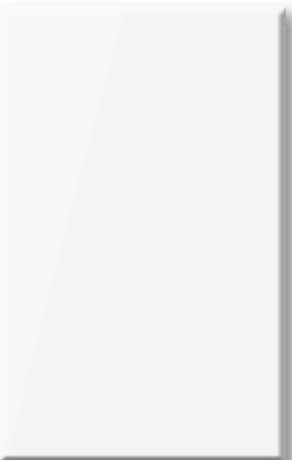
MM6 | SUPER MATTE  
BLACK



MM7 | SUPER MATTE  
DEEP BLUE



MM8 | SUPER MATTE  
JADE GREEN

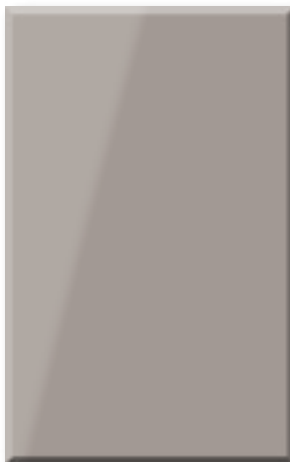


MG1 | HIGH GLOSS  
WHITE



MG2 | HIGH GLOSS  
LIGHT GREY





**MG3** | HIGH GLOSS  
TAN



**MG4** | HIGH GLOSS  
DARK GREY



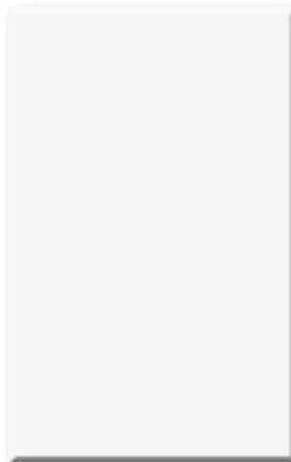
**MG5** | HIGH GLOSS  
GRAPHITE



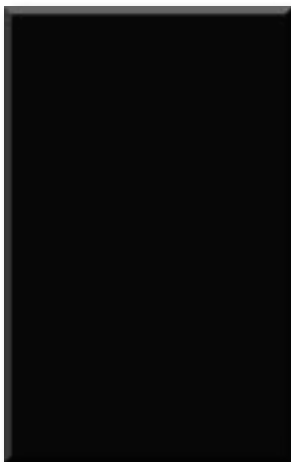
**MG6** | HIGH GLOSS  
BLACK



**MG7** | HIGH GLOSS  
DEEP BLUE



**IWM** | WHITE  
MELAMINE



**IBM** | BLACK  
MELAMINE



**IGM** | GREY  
MELAMINE



**IMM** | MAPLE  
MELAMINE



**PFMP** | PRE-FINISHED  
MAPLE  
PLYWOOD



FINGER PULL FINISHES



BRUSHED STAINLESS STEEL



BLACK



ANODIZED ALUMINUM



WHITE

FINGER PULL PARTS & PIECES



TOP - FNGRPUL - IC



CNTR - FNGRPUL - IC

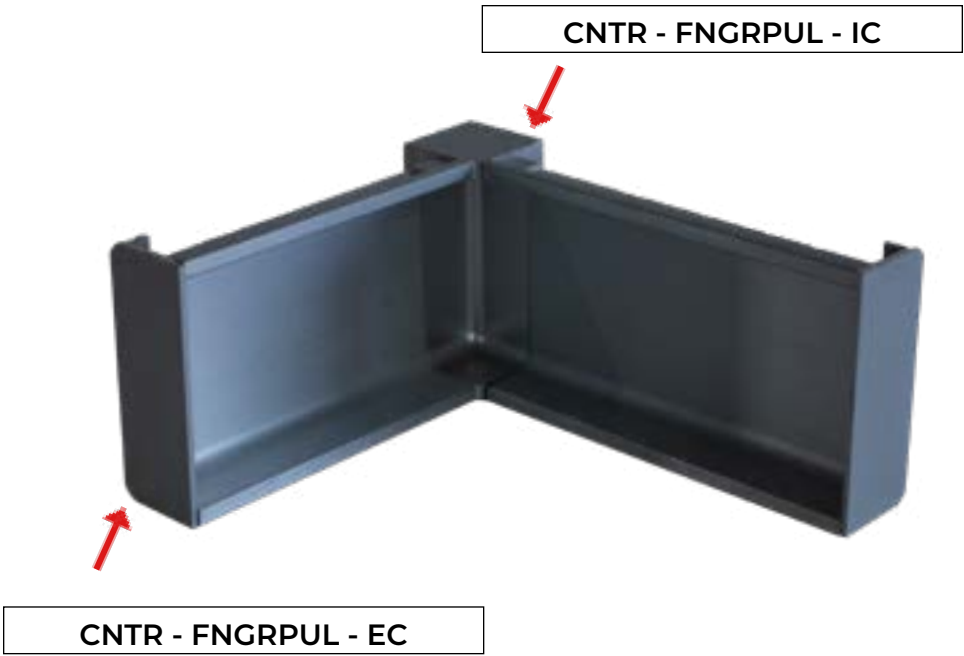
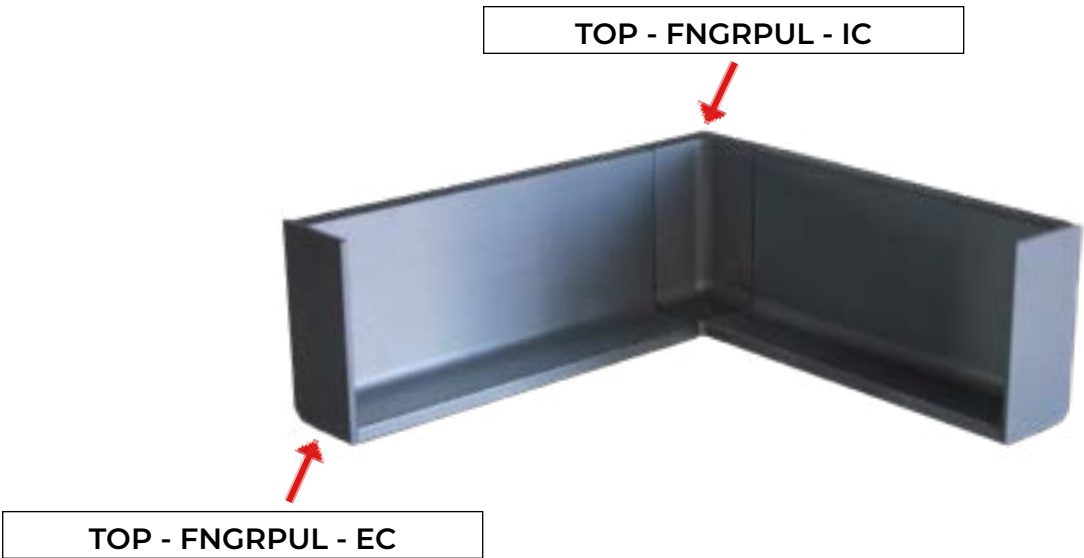


TOP - FNGRPUL - EC



CNTR - FNGRPUL - EC

FINGER PULL PARTS & PIECES





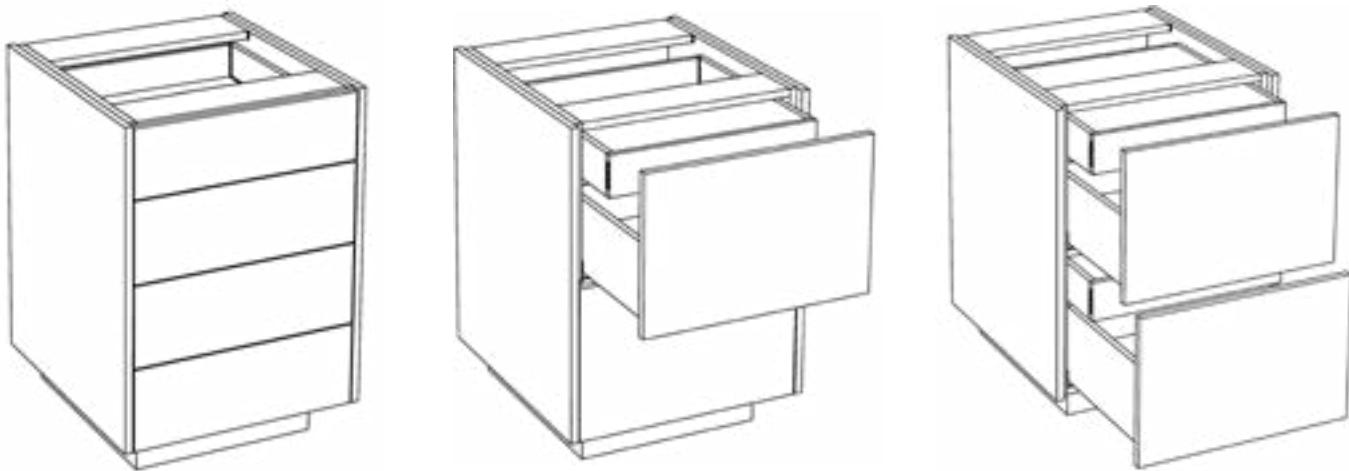
BASE CABINETRY

The default height for base cabinetry is 34 ½". Countertops would be added separately. The default depth, including doors and drawer fronts, is 24 7⁄8" deep. The height can be adjusted to your specific requirement(s) and the width is entered on the **EZ Order Form**. Each cabinet comes with four (4) Blum® adjustable leg levelers.

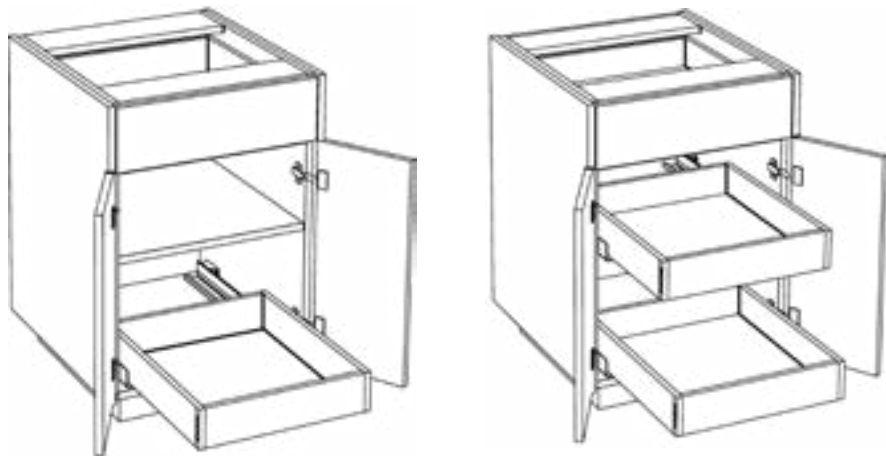
All of Funtime’s base cabinetry is built with unfinished ends, which means the **FINISHED ENDS** will need to be ordered separately.



B	B - 2DW	B - 3DW
---	---------	---------



B - 4DW	B - 2DW - 1HD	B - 2DW - 2HD
---------	---------------	---------------



B - 1DW - 1RO	B - 1DW - 2RO
---------------	---------------

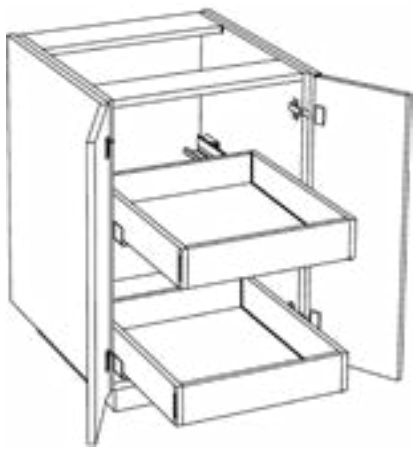


BASE CABINETRY

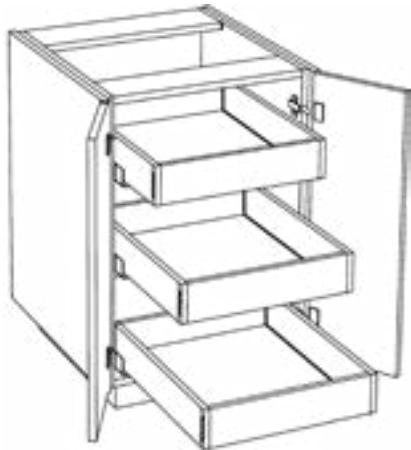
BASE CABINETRY



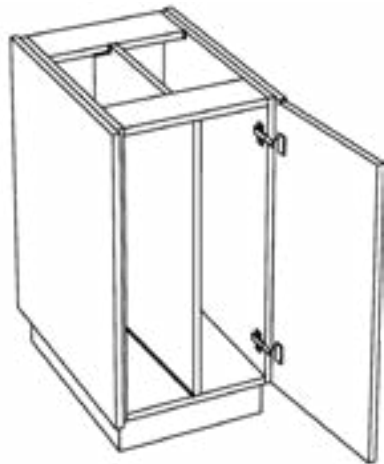
B - 2FHD - 1RO



B - 2FHD - 2RO



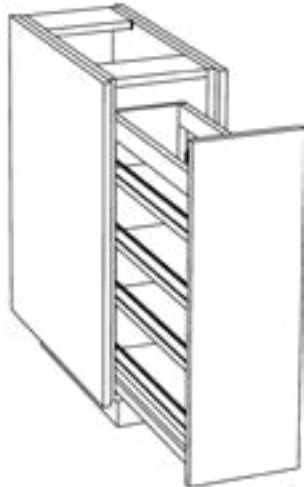
B - 2FHD - 3RO



B - DIV - 1FHD



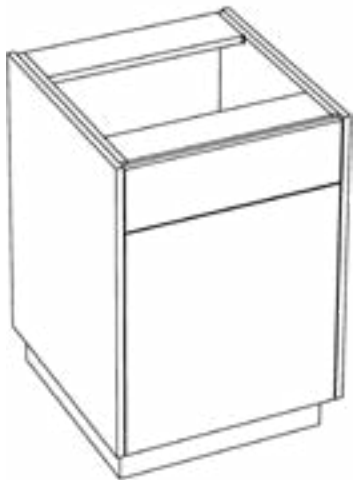
B - DIV - 2FHD



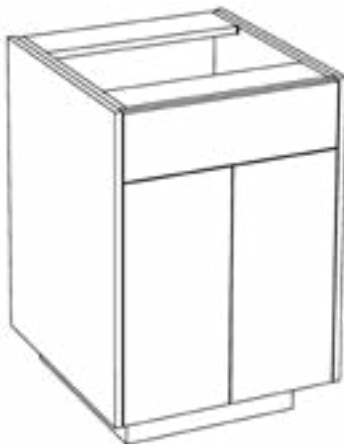
B - SPO



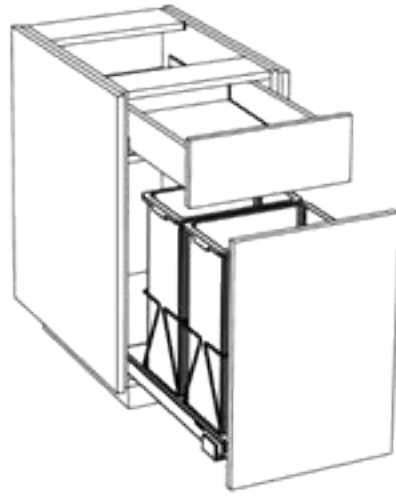
B - MICRO



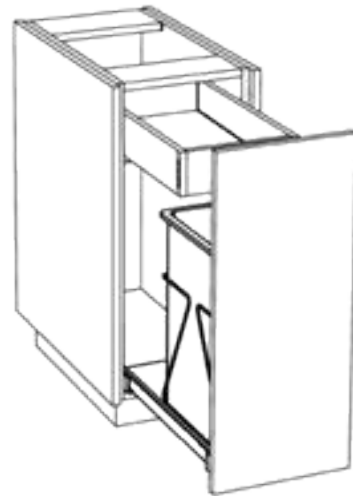
B - SB - 1DR



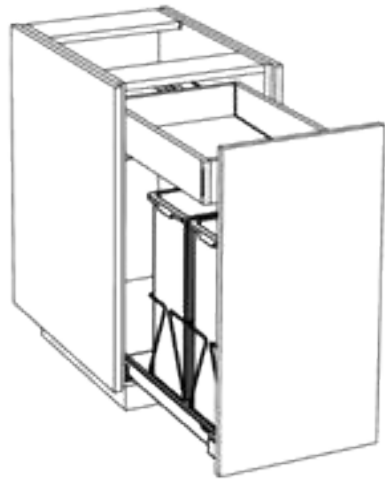
B - SB - 2DR



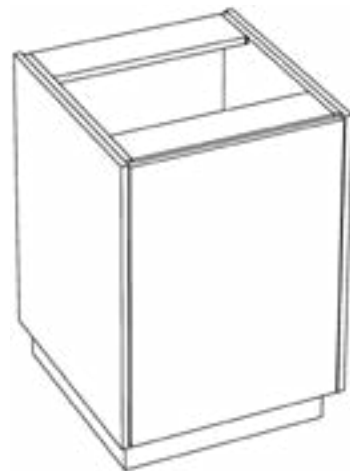
B - TPO - DBL - 50QT



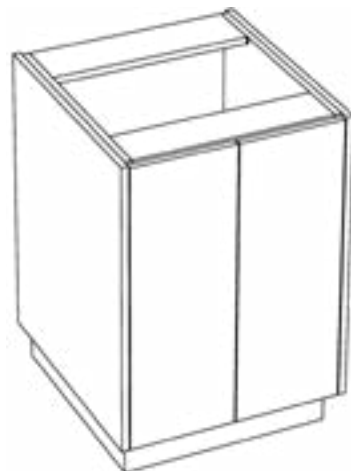
B - TPO - 1HDW - SNG - 35QT



B - TPO - 1HDW - DBL - 35QT



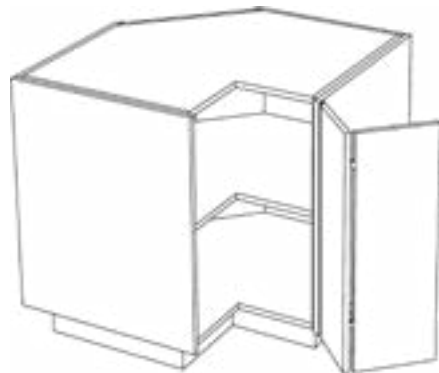
B - SB - 1FHD



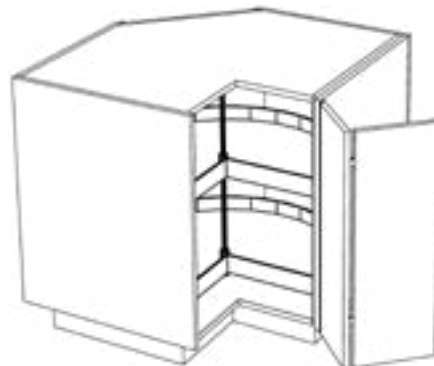
B - SB - 2FHD



SB - FHOUSE



BCC - WITH SHELF



BCC - WITH SUSAN



PENCIL - DW



BASE - FE

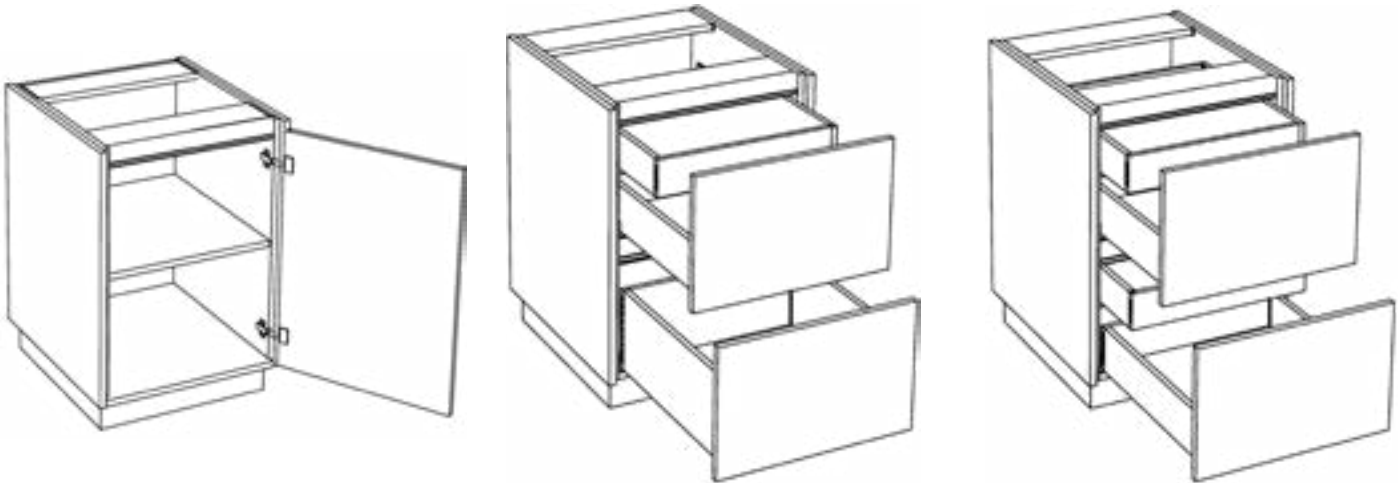


# FINGER PULL BASE CABINETRY

*Don't like Handles? Then don't use them!*

For your kitchen bath and closet needs, utilize our integrated **FINGER PULL** style cabinets and avoid hardware all together. Our **FINGER PULL** cabinet channels are offered in white, black or stainless.

## FINGER PULL BASE CABINETRY



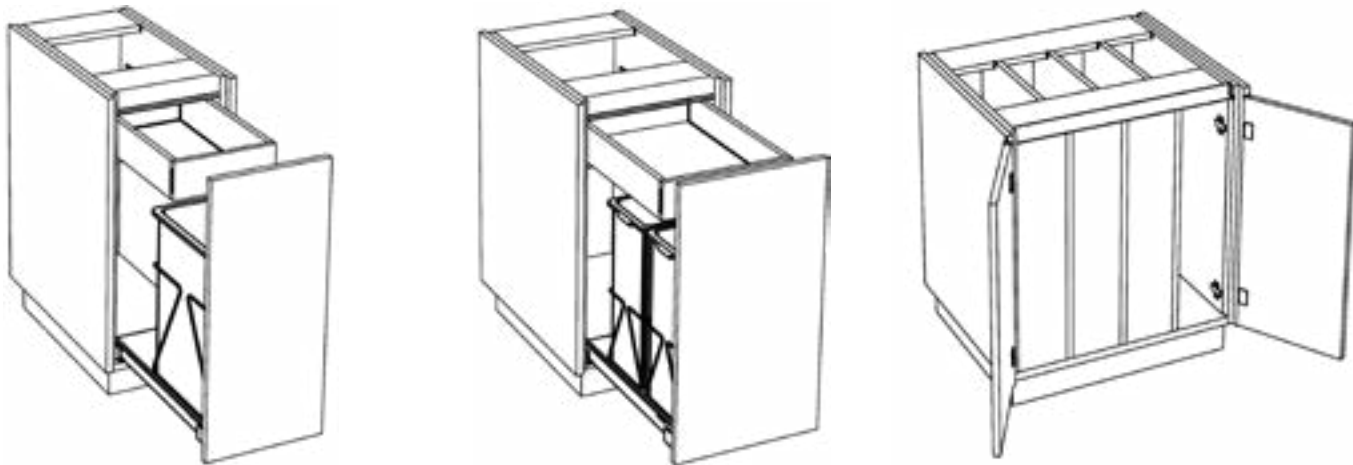
FP - B - 1FHD	FP - B - 2DW - 1HD	FP - B - 2DW - 2HD
---------------	--------------------	--------------------



FP - SB - 1FHD	FP - SB - 2FHD	FP - B - DIV - 1FHD
----------------	----------------	---------------------



FP - B - 1DW	FP - B - 2DW	FP - B - 3DW
--------------	--------------	--------------



FP - B - FHD - TPO - 1HDW- SNG - 27QT	FP - B - FHD - TPO - 1HDW - DBL - 35QT	FP - B - DIV - 2FHD
---------------------------------------	--	---------------------



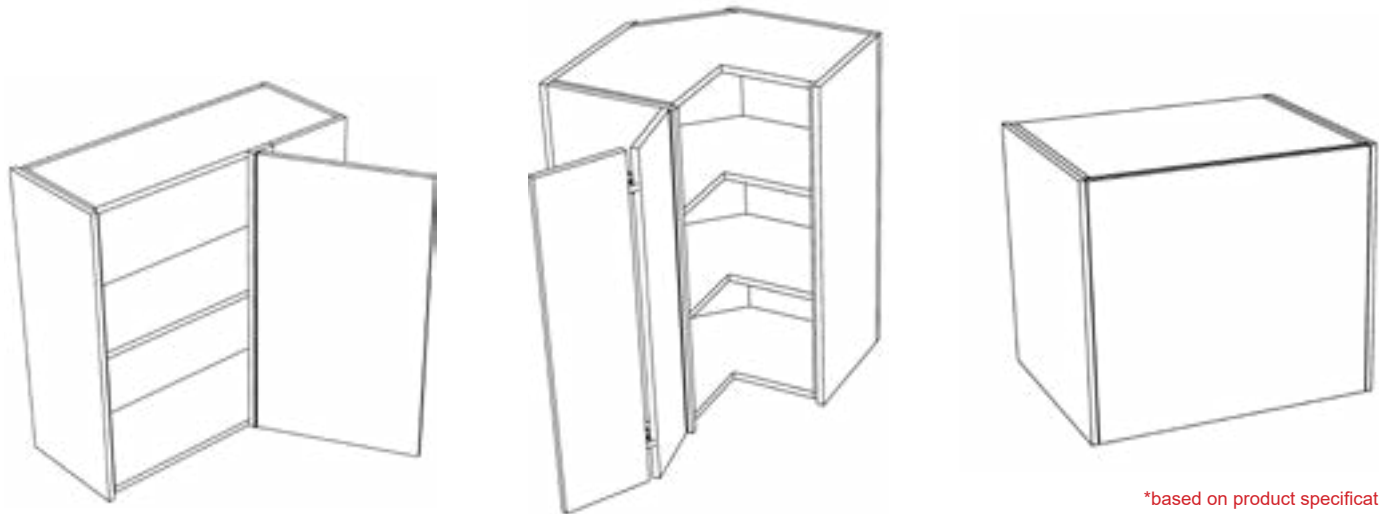
WALL CABINETRY

The default depth for wall cabinetry is 13 7/8" (including the doors). Height is entered on the *EZ Order Form*, along with the required width for your project. The depth can be changed or adjusted based on your project requirements. If an LED lighting skin is added on the bottom of the wall cabinet, be sure to enter that on the *EZ Order Form* as well.

Remember that all wall cabinetry is built with *unfinished* ends. The finished ends must be ordered separately (see page 63 for all finished end options).

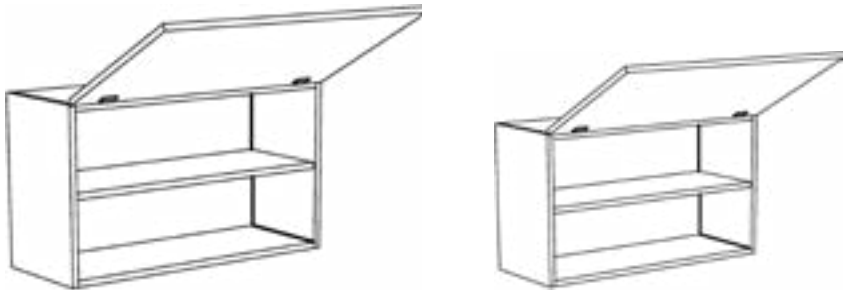


W - 1	W - 2	WBC - L
-------	-------	---------

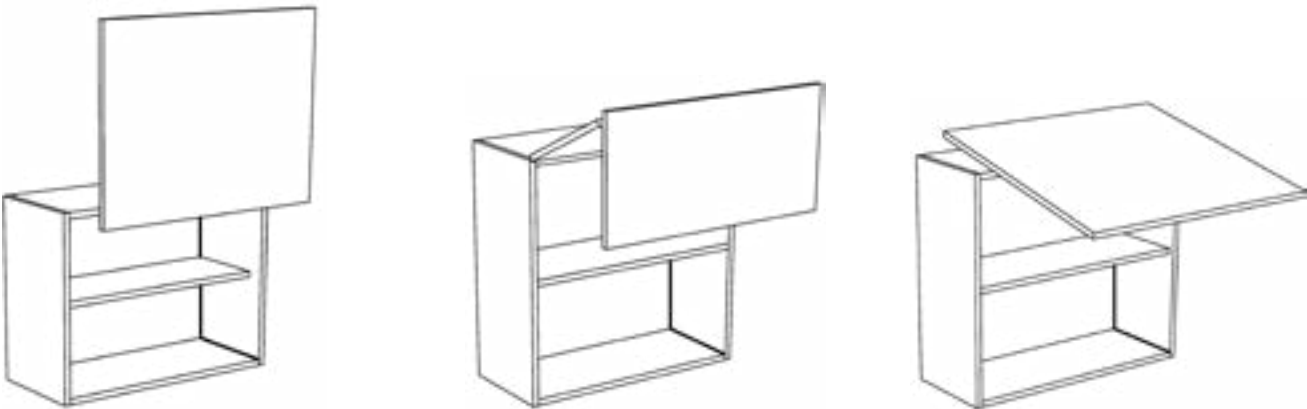


\*based on product specifications

WBC - R	WCC	HOOD
---------	-----	------



AVENTOS - HK	AVENTOS - HKS
--------------	---------------



AVENTOS - HL	AVENTOS - HF	AVENTOS - HS
--------------	--------------	--------------



## TALL CABINETS

The default depth for tall cabinetry is 25 7/8" (including doors and drawer fronts). This is 1" deeper than the base cabinetry so the countertop has something to die into (this way the base counter does not stick out past the tall cabinet).

This is important to consider so that the countertop does not stick out where a base cabinet meets a tall cabinet. Depth, width and height can all be adjusted on the EZ Order form. When ordering oven and appliance cabinets, input the appliance opening of your desired cabinet on the EZ Order form (confirm where the height of the appliance is located based on your appliance specs). Tall cabinets also come with four (4) adjustable Blum® leg levelers.

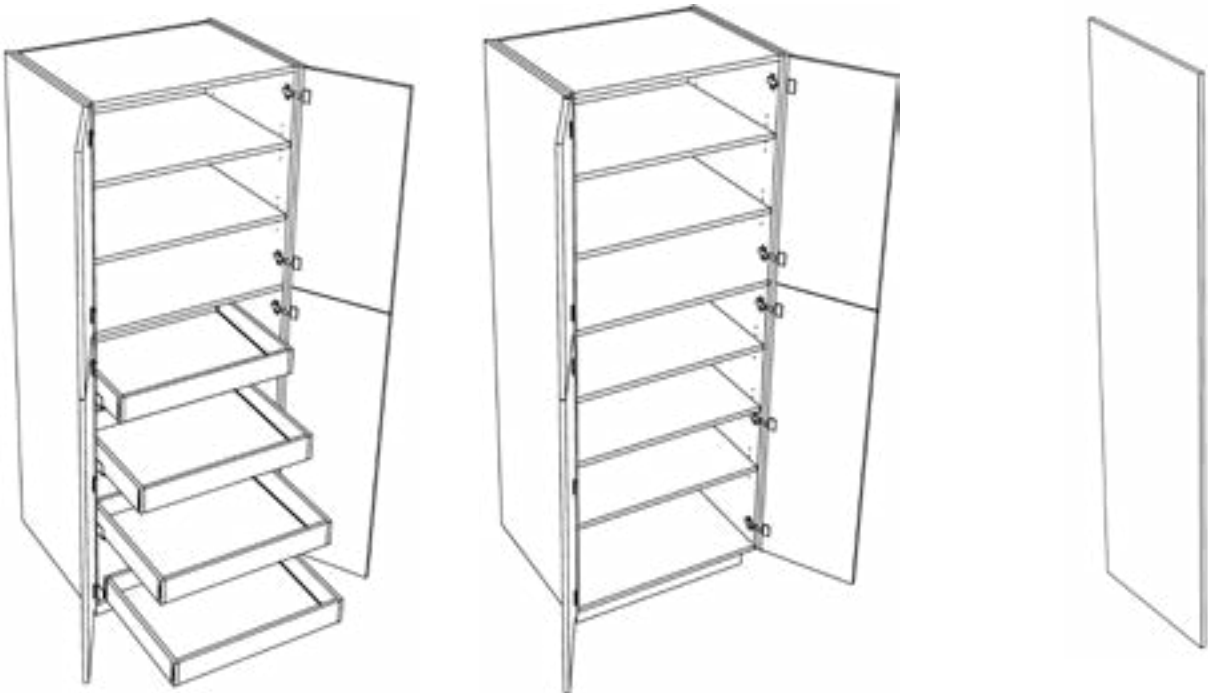






TALL - SNG OVEN - 2DR

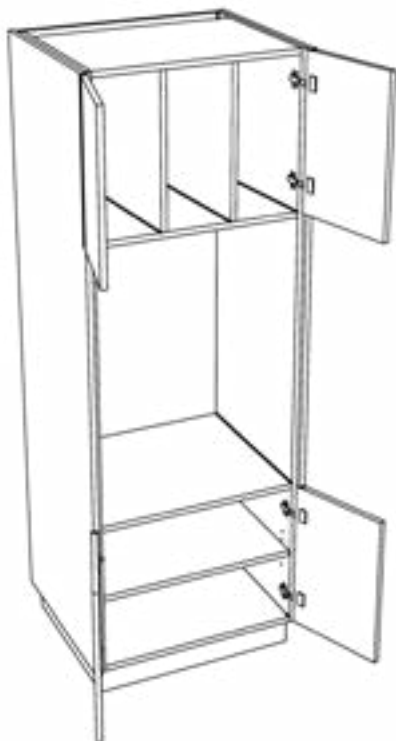
TALL - SNG OVEN - 2DW



TALL PANTRY

TALL STORAGE

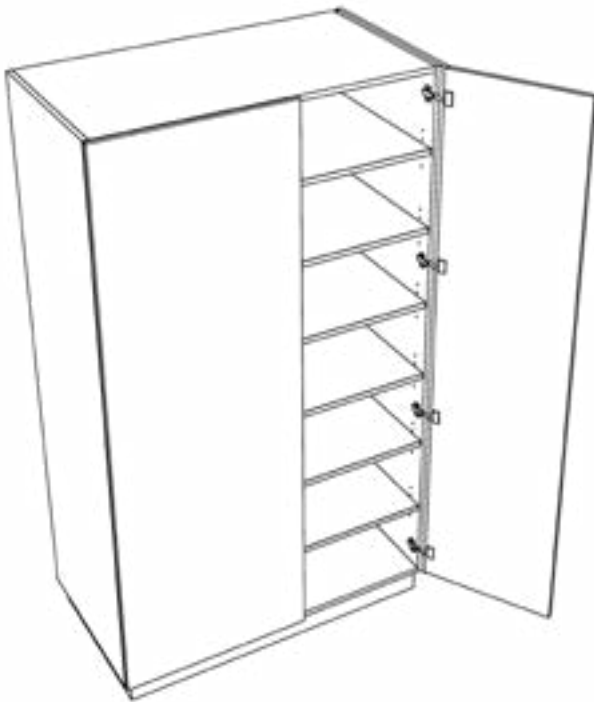
TALL - FE



TALL - DBL OVEN - 2DR



TALL - DBL OVEN - 1DW



TALL BLIND - LEFT



TALL BLIND - RIGHT



## VANITIES

*Of course we build vanities!*

You can have it all at Funtime. We make it simple to modernize your bathroom with a floating vanity. Floating, finger pull and standard vanities offered in any size you desire. Our vanities have the same rigid quality as all of our other custom cabinets and have integrated  $\frac{3}{4}$ " backs.

## INTEGRATED FINGER PULL VANITIES

*Remove the handles in all of your rooms!*

Finger pull vanities will add a sleek design to your home and you will never bump your leg on another handle again!

All our vanities come with the option of finger pulls.

## FLOATING VANITIES

Looking for a more modern and minimal look?

Float your vanities to achieve this impressive look. Since our cabinets are built with all  $\frac{3}{4}$ " high quality material using old fashioned assembly methods, our cabinets are very strong and do not need anything special to install floating. As long as you can get the screws into the studs during install you do not need special metal supports, or any blocking inside the wall.

Our default float is recommended at 8" (therefore, assuming a 36" countertop height finish minus a  $1\frac{1}{2}$ " thick countertop). The cabinetry would then be ordered at  $26\frac{1}{2}$ " tall.

## FLOATING FINGER PULL VANITIES

*YES, you can say NO!*

Say NO to handles on floating vanities!

This is the same selection of vanities as the floating vanity section, but we took off the handles!



VANITIES



V - 1DR - 1DW



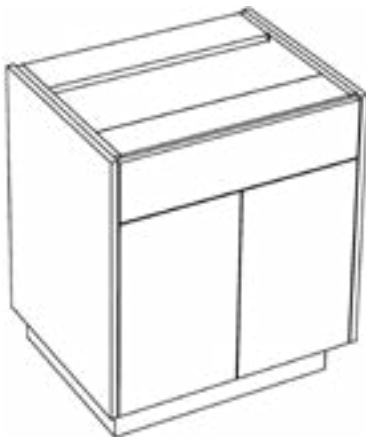
V - 2DW



V - 3DW



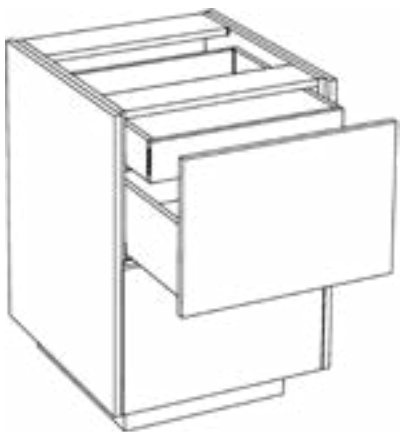
V - SB - 1DR



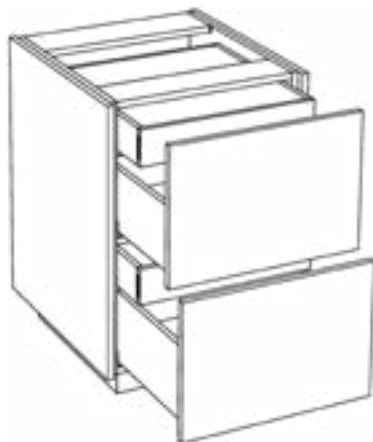
V - SB - 2DR



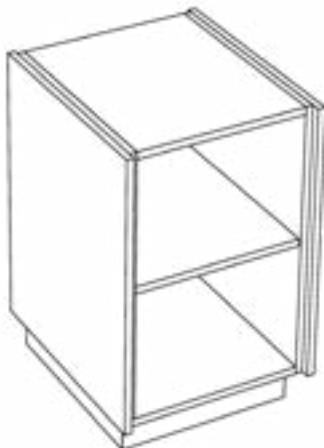
V - SB - 1FHD



V - 2DW - 1HD



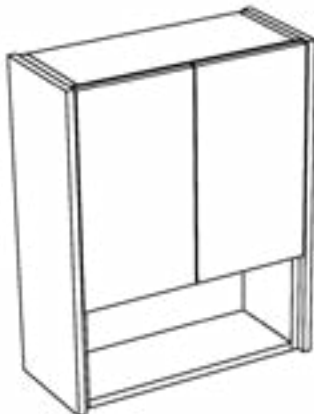
V - 2DW - 2HD



V - OPEN



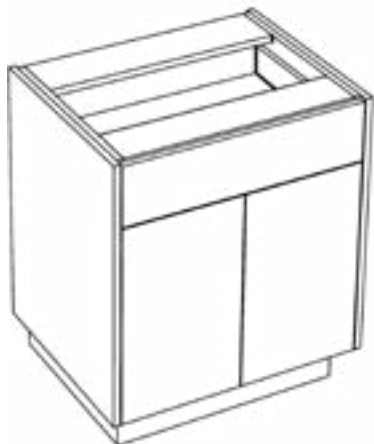
V - SB - 2FHD



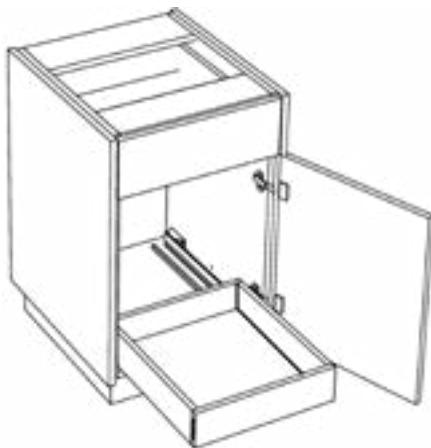
ABOVE TOILET



PENCIL - DW



V - 2DR - 1DW



V - 1DR - 1DW - 1RO



V - 2DR - 1DW - 1RO



FLOATING VANITIES

FLOATING VANITIES



VF - 1FHD	VF - 2FHD	VF - 2DW
-----------	-----------	----------



VF - 2DW - 1HD	VF - 2DW - 2HD	VF - SB - 1FHD
----------------	----------------	----------------



VF - 3DW	VF - 1DR - 1DW	VF - 2DR - 1DW
----------	----------------	----------------



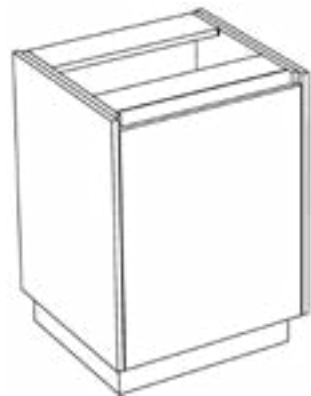
VF - SB - 2FHD	VF - SB - 1DR	VF - SB - 2DR
----------------	---------------	---------------



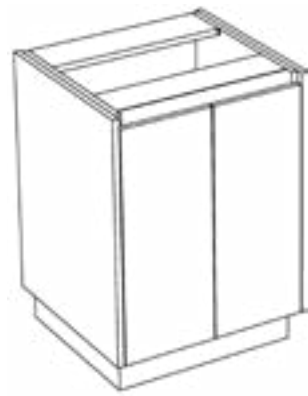
VF - 1DR - 1DW - 1RO	VF - 2DR - 1DW - 1RO	VF - OPEN
----------------------	----------------------	-----------



# INTEGRATED FINGER PULL VANITIES



V - FP - 1FHD



V - FP - 2FHD



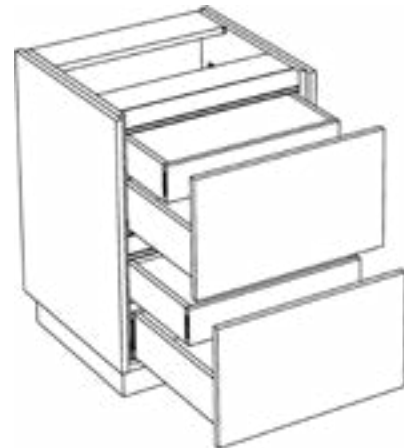
V - FP - 2DW



V - FP - 3DW



V - FP - 2DW - 1HD



V - FP - 2DW - 2HD



V - FP - SB - 1FHD

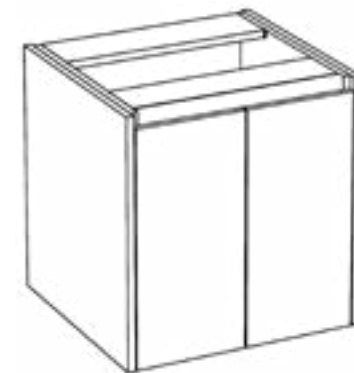


V - FP - SB - 2FHD

# FLOATING FINGER PULL VANITIES



VF - FP - 1FHD



VF - FP - 2FHD



VF - FP - 2DW



VF - FP - 3DW



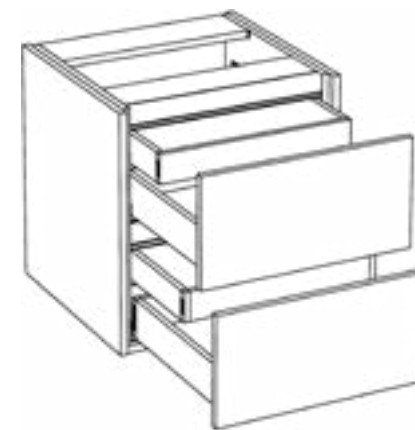
VF - FP - SB - 1FHD



VF - FP - SB - 2FHD



VF - FP - 2DW - 1HD



VF - FP - 2DW - 2HD



CLOSETS

CLOSETS

While you are at it, spruce up those old closets with a Funtime Closet solution. We kept it basic here, simple solutions for simple closets. Funtime **CLOSETS** are built with the same care and quality as all of our cabinets. We use the same top-notch construction methods and quality materials. Let us help make your closet dream vision become a reality with a Funtime Closet system.

Closet poles, rods and shoe fences (racks) are available in matte aluminum finish.



CL - 4DW - DRESSER



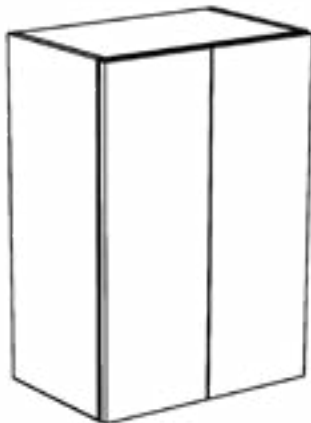
CL - 5DW - DRESSER



CL - SHLF - POLE



CL - W - 1DR



CL - W - 2DR



CL - W - OPEN

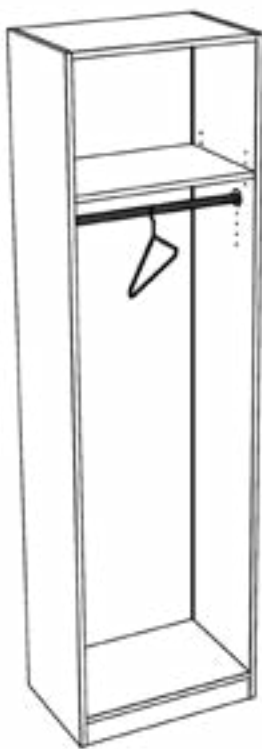


MATTE ALUMINUM FINISH\*

\*For all closet poles, rods and shoe fences (racks).

SEE FULL COLLECTION OF CLOSET CABINETRY ON THE FOLLOWING PAGES





CL - T - LONG

CL - T - DBL

CL - T - SNG - HAMPER



WD - T - SHELVES

WD - DBL - HNG

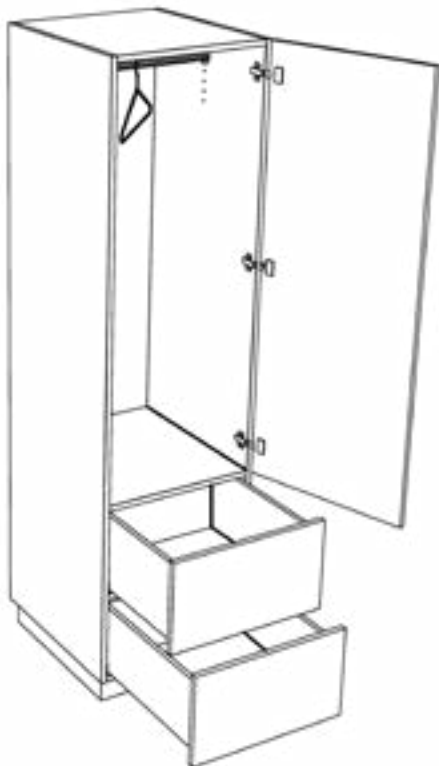
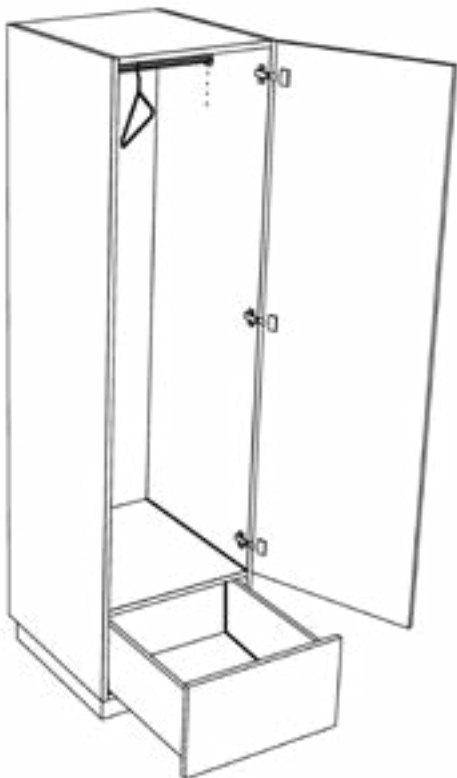


\*Due to shoe fences these cabinets are only offered in 14", 20" and 26" finished cabinet widths. This product is available only in a matte aluminum finish.

CL - T - SHELVES

CL - T - SNG - SHELVES

CL - T - SHOE\*



WD - SNG - HNG - 1DW

WD - SNG - HNG - 2DW



*PARTS & PIECES* are very important when it comes to adding the finishing touches to your project.

Funtime will double check your order to see if you have missed anything and communicate our concerns. In the meantime, check here to see if you need to add any of these items to complete your job.

INTEGRATED FINGER PULL PARTS

FINGER PULL CHANNELS - INSIDE CORNERS - TOE KICK CLIPS



CNTR - FNGRPUL

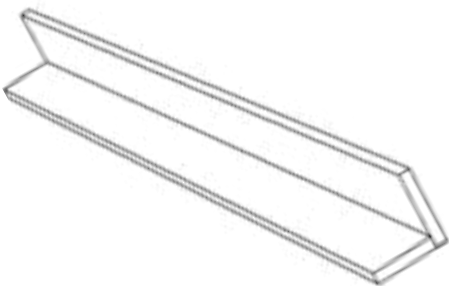


TOP - FNGRPUL

FLAT CROWN

*FLAT CROWN* is used to finish the upper and tall cabinets to the ceiling.

*FLAT CROWN* is always made ONE inch taller than ordered.

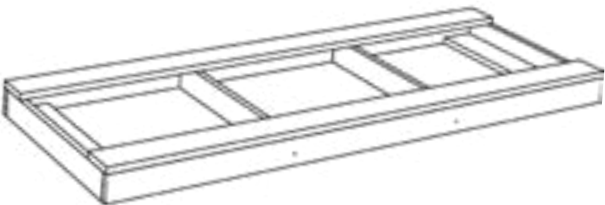


FLTCRN

TOE KICKS & PLATFORMS

*PLATFORMS* are built to the dimension requested. NOTE: deduct for 3/4" added finished material that will be applied to the exposed sides. You MUST order the right amount of *TOE-KICK* to wrap the *PLATFORM*.

For standard cabinets that have adjustable leg levelers, you MUST order *TOE-KICK* for covering the legs. We supply the pieces necessary to attach to the legs, based on your order and number of base and tall cabinetry.



PLATFORM



TOE - KICK



FILLERS

Fillers will be ordered at the SAME HEIGHT of the cabinet.  
*STD - FILLER*: used for all base and tall cabinets.  
*FULL - FILLER*: used where you need a full return as some or all will be exposed.  
*COLUMN - FILLER*: used for a Refrigerator opening or other uses where only a small amount of the filler will be visible on the short side of the filler.  
*COLUMN - FULL*: filler used where both sides are visible at some/any point.



STD - FILLER	UP - FILLER - NO - SKIN	UP - FILLER - W - SKIN
--------------	-------------------------	------------------------



FULL - FILLER	COLUMN - FILLER	COLUMN - FULL
---------------	-----------------	---------------

FINISHED ENDS

Only the ISLAND Filler will be finished on both ends. That 3/4" scribe on filler comes at the exact dimension ordered.  
  
The other fillers will have an extra 1/2" added for scribe.



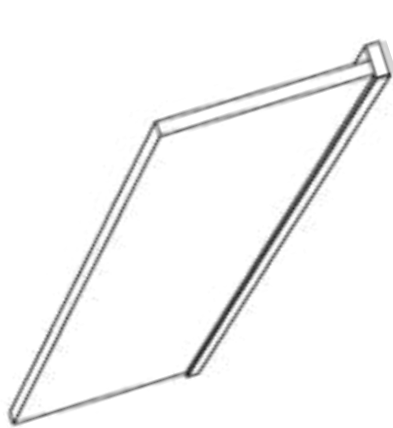
UP - FE	BASE - FE
---------	-----------



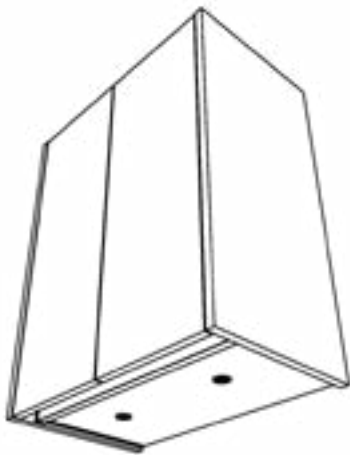
TALL - FE	ISLAND - FE
-----------	-------------



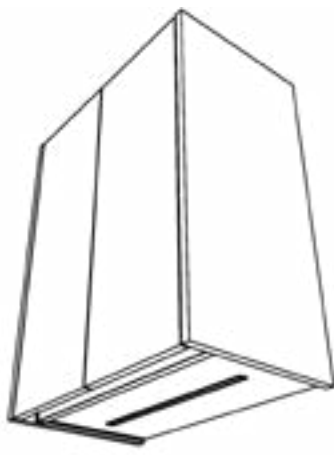
LED LIGHTING SKINS



LIGHT - SKIN



LED PUCK LIGHT - SKIN



LED STRIP LIGHT - SKIN

EZ CODE + SECTION  
BASE CABINETRY

B  
B - 2DW  
B - 2DW - 1HD  
B - 2DW - 2HD  
B - 3DW  
B - 4DW  
BASE - FE  
BCC - WITH SHELF  
BCC - WITH SUSAN  
B - DIV - 1FHD  
B - DIV - 2FHD  
B - 1DW - 1RO  
B - 1DW - 2RO  
B - 2FHD - 1RO  
B - 2FHD - 2RO  
B - 2FHD - 3RO  
B - MICRO  
B - SB - 1DR  
B - SB - 1FHD  
B - SB - 2DR  
B - SB - 2FHD  
B - SPO  
B - TPO - DBL - 50QT  
B - TPO - 1HDW - SNG - 35QT  
B - TPO - 1HDW - DBL - 35QT  
PENCIL - DW  
SB - FHOUSE

FINGER PULL BASE CABINETRY

FP - B - 1 DW  
FP - B - 1FHD  
FP - B - 2DW  
FP - B - 2DW - 1HD  
FP - B - 2DW - 2HD  
FP - B - 3DW  
FP - B - FHD - TPO - 1HDW - SNG - 27QT  
FP - B - FHD - TPO - 1HDW - DBL - 35QT  
FP - SB - 1FHD  
FP - SB - 2FHD  
FP - B - DIV - 1FHD  
FP - B - DIV - 2FHD

WALL CABINETRY

AVENTOS - HF  
AVENTOS - HK  
AVENTOS - HL  
AVENTOS - HKS  
AVENTOS - HS  
HOOD  
W - 1  
W - 2  
WBC - L  
WBC - R  
WCC

TALL CABINETRY

TALL BLIND - LEFT  
TALL BLIND - RIGHT  
TALL PANTRY  
TALL STORAGE  
TALL - FE  
TALL - DBL OVEN - 1DW  
TALL - SNG OVEN - 2DW  
TALL - DBL OVEN - 2DR  
TALL - SNG OVEN - 2DR

PRODUCT DESCRIPTION

Base cabinet with one drawer on top + one adjustable shelf inside  
Base cabinet with two drawers  
Base cabinet with two drawers + one hidden drawer  
Base cabinet with two drawers + two hidden drawers  
Base cabinet with three drawers  
Base cabinet with four drawers  
Base finished end panel  
Base corner cabinet with a fixed shelf  
Base corner cabinet with a Lazy Susan. Wood with chrome shaft and bearings  
Base cabinet with one permanent divider for sheet pans or cutting boards + one full height door  
Base cabinet with three permanent dividers for sheet pans or cutting boards + two full height doors  
Base cabinet with one drawer on top + one rollout inside  
Base cabinet with one drawer on top + two rollouts inside  
Base cabinet with two full height doors + one rollout + one shelf inside  
Base cabinet with two full height doors + two rollouts inside  
Base cabinet with two full height doors + three rollouts inside  
Base cabinet made for a microwave. \*Opening size required.  
Base cabinet for sink, with one door + a false front. Facia to cover sink included in finished material  
Base cabinet for sink, with one door. Facia to cover sink included in finished material  
Base cabinet for sink, with two doors + false front. Facia to cover sink included in finished material  
Base cabinet for a sink, with two full height doors. Facia to cover sink included in finished material  
Base cabinet with a spice pullout inside  
Base cabinet with double 50QT trash cans + one full height door  
Base cabinet with single 35QT trash can + one full height door + hidden trash bag drawer  
Base cabinet with double 35QT trash cans + one full height door + hidden trash bag drawer  
Shallow single drawer (used for makeup or pencils)  
Base cabinet made for a farmhouse sink

Finger Pull base cabinet with a single drawer on top + two doors below  
Finger Pull base cabinet with a single full height door + shelves inside  
Finger Pull base cabinet with two drawers  
Finger Pull base cabinet with two drawers + one hidden drawer on top  
Finger Pull base cabinet with two drawers + two hidden drawers  
Finger Pull base cabinet with three drawers  
Finger Pull base cabinet with one door attached to a single 27QT trash system + a hidden drawer at top  
Finger Pull base cabinet with one door attached to a double 35QT trash system + a hidden drawer at top  
Finger Pull sink base cabinet with one full height door  
Finger Pull sink base cabinet with two full height doors  
Finger pull base cabinet with one full height door + tray dividers inside  
Finger pull base cabinet with two full height doors + tray dividers inside

This is a 2 Horizontal door system that Bi-Folds upwards  
This is a single door system that hinges from the top + rotates upward for doors 10" to 24" tall  
This is a single door system that lifts the door straight up  
This is the same as the HK but meant for short doors 8" to 24"  
This is a single door system that lifts the door up and over the top of the cabinet  
This is a hood box meant for fitting any hood liner purchased (order based on hood liner specs)  
This is a standard wall cabinet with one door  
This is a standard wall cabinet with two doors  
This is a wall corner cabinet with the left side "blind" into the corner  
This is a wall corner cabinet with the right side "blind" into the corner  
This is a 90 degree corner wall cabinet with 2 doors hinged together

Tall corner blind storage cabinet with shelves inside (meant for blind left application)  
Tall corner blind storage cabinet with shelves inside (meant for blind right application)  
Tall pantry cabinet with four doors + four internal rollouts  
Tall pantry cabinet with four doors + adjustable shelves inside  
Tall finished end used to cover where a tall cabinet end is exposed  
Tall double oven cabinet with three vertical openings at top for oven tray storage + one drawer on the bottom  
Tall single oven cabinet with three vertical openings at top for oven tray storage + two drawers on the bottom  
Tall double oven cabinet with three vertical openings at top for oven tray storage + two doors on the bottom  
Tall single oven cabinet with three vertical openings at top for oven tray storage + two doors on the bottom



EZ CODE + SECTION  
VANITIES

ABOVE TOILET  
PENCIL - DW  
V - 2DW  
V - 2DW - 1HD  
V - 2DW - 2HD  
V - 3DW  
V - 1DR - 1DW  
V - 1 DR - 1DW - 1RO  
V - 2 DR - 1DW  
V - 2DR - 1DW - 1RO  
V - OPEN  
V - SB - 1DR  
V - SB - 2DR  
V - SB - 1FHD  
V - SB - 2FHD

FLOATING VANITIES

VF - 2DW  
VF - 2DW - 1HD  
VF - 2DW - 2HD  
VF - 3DW  
VF - 1DR - 1DW  
VF - 1DR - 1DW - 1RO  
VF - 2DR - 1DW  
VF - 2DR - 1DW - 1RO  
VF - 1FHD  
VF - 2FHD  
VF - OPEN  
VF - SB - 1DR  
VF - SB - 1FHD  
VF - SB - 2DR  
VF - SB - 2FHD

INTEGRATED FINGER PULL VANITIES

V - FP - 1FHD  
V - FP - 2FHD  
V - FP - 2DW  
V - FP - 2DW - 1HD  
V - FP - 2DW - 2HD  
V - FP - 3DW  
V - FP - SB - 1FHD  
V - FP - SB - 2FHD

FLOATING FINGER PULL VANITIES

VF - FP - 1FHD  
VF - FP - 2FHD  
VF - FP - 2DW  
VF - FP - 2DW - 1HD  
VF - FP - 2DW - 2HD  
VF - FP - 3DW  
VF - FP - SB - 1DR  
VF - FP - SB - 2DR  
VF - OPEN

PRODUCT DESCRIPTION

Two door cabinet above toilet (shallow storage for toiletries)  
Shallow single drawer (used for makeup or pencils)  
Vanity cabinet with two drawers  
Vanity cabinet with two drawers + one hidden drawer  
Vanity cabinet with two drawers + two hidden drawers  
Vanity cabinet with three drawers  
Vanity cabinet with one door + one drawer  
Vanity cabinet with one door + one drawer + one internal rollout drawer  
Vanity cabinet with two doors + one drawer  
Vanity cabinet with two doors + one drawer + one internal rollout drawer  
Vanity cabinet with finished interior (no doors or drawers)  
Vanity cabinet made for sink with false front + one door  
Vanity cabinet made for sink with false front + two doors  
Vanity cabinet made for sink with full height single door  
Vanity cabinet made for sink with two full height doors

Floating Vanity with two drawers  
Floating Vanity with two drawers + one hidden drawer  
Floating Vanity with two drawers + two hidden drawers  
Floating Vanity with three drawers  
Floating Vanity with one door + one drawer  
Floating Vanity with one door + one drawer + one rollout drawer  
Floating Vanity with two doors + one drawer  
Floating Vanity with two doors + one drawer + one rollout drawer  
Floating Vanity with one full height door  
Floating Vanity with two full height doors  
Floating Vanity base cabinet with open finished interior (no door)  
Floating Vanity sink base cabinet with one door + false front  
Floating Vanity sink base cabinet with one full height door  
Floating Vanity sink base cabinet with two doors + false front  
Floating Vanity sink base cabinet with two full height doors

Finger Pull Vanity base cabinet with one full height door  
Finger Pull Vanity base cabinet with two full height doors  
Finger Pull Vanity base cabinet with two drawers  
Finger Pull Vanity base cabinet with two drawers + one hidden drawer  
Finger Pull Vanity base cabinet with two drawers + two hidden drawers  
Finger Pull Vanity base cabinet with three drawers  
Finger Pull Sink Base Vanity base cabinet with one full height door  
Finger Pull Sink Base Vanity base cabinet with two full height doors

Finger Pull Floating Vanity base cabinet one full height door  
Finger Pull Floating Vanity base cabinet two full height doors  
Finger Pull Floating Vanity base cabinet with two drawers  
Finger Pull Floating Vanity base cabinet with two drawers + one hidden drawer  
Finger Pull Floating Vanity base cabinet with two drawers + two hidden drawers  
Finger Pull Floating Vanity base cabinet with three drawers  
Finger pull floating Vanity sink base cabinet with one door + a false front  
Finger pull floating Vanity sink base cabinet with two doors + a false front  
Floating Vanity base cabinet with open finished interior (no door)

EZ CODE + SECTION  
CLOSETS

NEED ALL DESCRIPTIONS  
CL - 4DW - DRESSER  
CL - 5DW - DRESSER  
CL - SHLF - POLE  
CL - W - 1DR  
CL - W - 2DR  
CL - W - OPEN  
CL - T - SHELVES  
CL - T - SHOE  
CL - T - SNG - SHELVES  
CL - T - LONG  
CL - T - DBL  
CL - T - SNG - HAMPER  
WD - T - SHELVES  
WD - DBL - HNG  
WD - SNG - HNG - 1DW  
WD - SNG - HNG - 2DW

ALL PARTS & PIECES  
FINGER PULL PARTS

CNTR - FNGRPUL  
CNTR - FNGRPUL - EC

CNTR - FNGRPUL - IC

TOP - FNGRPUL  
TOP - FNGRPUL - EC

TOP - FNGRPUL - IC

FLAT CROWN  
FLTCRWN

TOE KICKS & PLATFORMS  
PLATFORM  
TOE-KICK

FILLERS  
STD - FILLER  
UP - FILLER - NO - SKIN  
UP - FILLER - W - SKIN  
FULL - FILLER  
COLUMN - FILLER  
COLUMN - FULL

FINISHED ENDS  
BASE - FE  
ISLAND - FE  
TALL - FE  
UP - FE

LED LIGHTING  
LED PUCK LIGHT - SKIN  
LED STRIP LIGHT - SKIN  
LIGHT - SKIN

PRODUCT DESCRIPTION

Base cabinet, a dresser with four drawers  
Base cabinet, a dresser with five drawers  
Shelf and a pole with matte aluminum shelf and pole hangers  
Closet wall cabinet with one door  
Closet wall cabinet with two doors  
Closet Wall cabinet that is open with no door  
Closet Tall cabinet open with Shelves inside  
Closet Tall cabinet with slanted shoe shelves + a fence to stop shoes from sliding out  
Closet Tall cabinet for single hanging with shelves above the pole  
Closet Tall cabinet for longer hanging with a shelf above the pole  
Closet Tall cabinet for double hanging  
Closet Tall single hanging with a hamper below  
Wardrobe Closet Tall full depth with a single door + shelves inside  
Wardrobe Closet Tall full depth with double hanging inside  
Wardrobe Closet Tall full depth with single hanging + one drawer below  
Wardrobe Closet Tall full depth with single hanging + two drawers below

Aluminum channel finger pull for center located finger pull  
An End Cap is used when the channel ends and shows the carcass material where the channel stops. Using an end cap (EC) covers the cabinet with matching metal  
This is only used if you have a continual finger pull channel on the center portion of your cabinetry, on an inside corner  
Aluminum channel finger pull for the top located finger pull  
An End Cap is used when the channel is stopping and will show the carcass material where the channel stops. Using an end cap covers the cabinet with matching metal.  
This is only used if you have a continual finger pull channel on the top portion of your cabinetry, on an inside corner.

This is the flat molding that goes above cabinetry to meet with the ceiling

Platform used for installing island base cabinetry (instead of adjustable legs)  
This is the matching material for the toe-kick area (made in lengths of 96")

Standard base and tall filler. Made at 2-¼” (meant to be installed at 1-½”)  
Standard upper filler (when you are NOT doing under cabinet lighting)  
Standard upper filler (when you are doing under cabinet lighting)  
This is a filler with a face + a full return on one side  
This is a filler with a face + a return of 4” + a full return on one side  
This is a filler with two full returns, where both sides will be seen (on some level)

Finished end panel for base cabinet  
Finished end panel for an island (made and ordered to cover entire end with one panel)  
Finished end panel for tall cabinet  
Finished end panel for upper cabinet

Lighting Skin for Puck lights  
Lighting Skin for Strip lights  
The light rail that attached to your wall/upper cabinetry and holds the lighting mechanism.





We look forward to working together and making your project complete. Once your order form has been submitted, we will send you a price estimate.

Lead time is 3 to 4 weeks.

Feel free to reach our directly with any questions, comments or concerns about the ordering process, products or materials.

Thank you.

CONTACT	Shawn Belschner, Owner
PHONE	(818)882-2281
EMAIL	shawn@funtimecabinetfactory.com
WEBSITE	www.funtimecabinetfactory.com

**CLICK HERE TO START YOUR ORDER FORM!**



## INSTRUCTIONS

**STEP 1** — Choose the material shown in the material portion of this catalog and this material is all of your visible exterior material. Doors, drawer fronts, light skins, end panels, toe kicks etc.

**STEP 2** — All of our drawers use Blum Full Extension and Soft Close undermount hardware, the choice is a **MATCHING** Door material, so your drawers are made from the same material as your doors, or a solid 5/8" thick **MAPLE**, dovetailed in the corners, and also using Blum hardware.

**STEP 3** — Most of the time **WHITE MELAMINE** or **PRE-FINISHED MAPLE PLYWOOD** is used. You can also choose **GREY, BLACK** and **MAPLE** melamine.

**STEP 4** — You can choose to use an integrated **FINGER-PULL** system or choose to use **HANDLES**.

**PRODUCT #** — This is the number under the cabinet you are choosing.

**WIDTH** — How wide do you want the cabinet, not including any finished ends.

**HEIGHT** — For a Kitchen, we default to 34 1/2" and a Vanity 32", but you can changed these to anything you want.

**DEPTH** — Our depths include the door or drawer fronts, and are as follows- Kitchen base cabinets are 24 7/8" deep. Tall cabinets are 25 7/8" deep. Upper cabinets are 13 7/8" deep and Vanities are 22 7/8" deep. Again, you can order anything.

**DOOR TYPE** — Door Type is if your door is **REGULAR, GLASS**, or **NO DOOR**. **R** = Regular, **G** = Glass, **ND** = No Door

**NUMBER OF DOORS** — Number of Doors is how many doors the cabinet to have. **SINGLE DOOR** or **PAIR OF DOORS**. **S** = Single Door, **P** = Pair of Doors \*If choosing Pair of Doors, leave "Hinge Placement" section blank\*

**HINGE PLACEMENT** — Hinges can be placed wherever you want. **LEFT, RIGHT, TOP** or **BOTTOM**, or **PAIR** of Hinges. Pair of hinges is used for cabinets with 2 doors. **L** = Left, **R** = Right, **T** = Top, **B** = Bottom



## INSTRUCTIONS

### LINE #

— This is the line number where your exact cabinet product number is entered. This line number may be used to reference something else about this cabinet and will be related by the line number of that exact cabinet.

### INTERIOR LIGHTING

— Interior lighting will be one Puck light per door, or a Strip light will be installed 2.5" from each end of the cabinet. If you have a 30" wide cabinet, a 25" strip light will be installed. Please select **PUCK** or **STRIP** for this feature.

### EXTERIOR LIGHTING

— This is for the Light Skin component. You will be entering **PUCK** or **STRIP** lights. Strip lights are held from the end of the skin by 3", and the Puck lights will be 1 per door, centered under the door in the Skin.

### LIGHTING COLOR TEMPERATURE

— Choose **2700K**, **3000K** or **3600K** for your desired lighting temperature. The lower the number, the more yellow and warm the light appears. The higher the number, the more White the light is. Most use 2700 for warm lighting.

### OPENING WIDTH

— This is for appliance placement. Read your oven specs, and follow the necessary opening width for the specific model number.

### OPENING HEIGHT

— This is for appliance placement. Read your oven specs, and follow the necessary opening height for the specific model number.

### OPENING VERTICAL PLACEMENT

— This too is typically a spec item, where the specs will tell you where to place vertically. If you have a double oven this will be the case. If you have a single oven, or a microwave, you choose the height you want this unit to be placed. Note- the number you enter will be where the unit sits in elevation, from the bottom of the unit.

### FINISHED END PLACEMENT

— This lets us know which side a finished end panel will be going onto a cabinet. **LEFT** or **RIGHT**. It is important to make sure that you have assigned the finished end panel to the appropriate cabinet to ensure that cabinet is assembled correctly.



**CUSTOMER  
INFORMATION**

FIRST AND LAST NAME:

COMPANY:

EMAIL:

PHONE:

STREET ADDRESS:

CITY:

STATE:

ZIP CODE:

**STEP 1**

CHOOSE YOUR EXTERIOR DOOR MATERIAL:

**STEP 2**

CHOOSE YOUR DRAWER TYPE:

**STEP 3**

CHOOSE YOUR INTERIOR MATERIAL:

**STEP 4**

CHOOSE YOUR OPEN METHOD:

**HANDLES**

**FINGER PULL**

☐

☐ WHITE

☐ BLACK

☐ ANODIZED  
ALUMINUM

☐ BRUSHED  
STAINLESS STEEL

PROCEED TO NEXT PAGE TO ENTER DESIRED PRODUCTS.

**EXAMPLE**

**CUSTOMER  
INFORMATION**

FIRST AND LAST NAME: JOEL MILLER

COMPANY: MILLER CONSTRUCTION

EMAIL: JMILLER@MCINC.COM

PHONE: (818) 999-9999

STREET ADDRESS: 123 HAPPY LANE

CITY: PLEASANTVILLE

STATE: CA

ZIP CODE: 12345

**STEP 1**

CHOOSE YOUR EXTERIOR DOOR MATERIAL: 74V ROBLE STELLA

**STEP 2**

CHOOSE YOUR DRAWER TYPE: MATCHING

**STEP 3**

CHOOSE YOUR INTERIOR MATERIAL: MAPLE MELAMINE

**STEP 4**

CHOOSE YOUR OPEN METHOD:

**HANDLES**

**FINGER PULL**

☐

☐ WHITE

☒ BLACK

☐ ANODIZED  
ALUMINUM

☐ BRUSHED  
STAINLESS STEEL

PROCEED TO NEXT PAGE TO ENTER DESIRED PRODUCTS.

**EXAMPLE**

**CUSTOMER  
INFORMATION**

FIRST AND LAST NAME: JOEL MILLER

COMPANY: MILLER CONSTRUCTION

EMAIL: JMILLER@MCINC.COM

PHONE: (818) 999-9999

STREET ADDRESS: 123 HAPPY LANE

CITY: PLEASANTVILLE

STATE: CA ZIP CODE: 12345

**STEP 1**

CHOOSE YOUR EXTERIOR DOOR MATERIAL: 74V ROBLE STELLA

**STEP 2**

CHOOSE YOUR DRAWER TYPE: MATCHING

**STEP 3**

CHOOSE YOUR INTERIOR MATERIAL: MAPLE MELAMINE

**STEP 4**

CHOOSE YOUR OPEN METHOD:

**HANDLES** **FINGER PULL**

☐

☐ WHITE

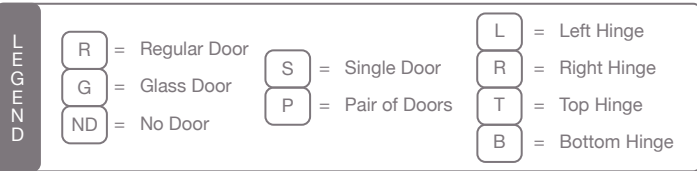
☒ BLACK

☐ ANODIZED  
ALUMINUM

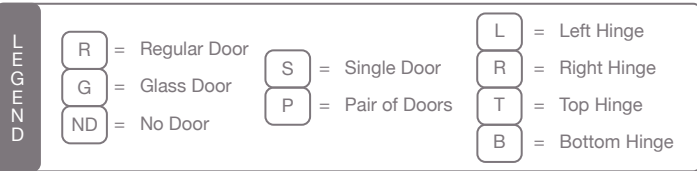
☐ BRUSHED  
STAINLESS STEEL

PROCEED TO NEXT PAGE TO ENTER DESIRED PRODUCTS.

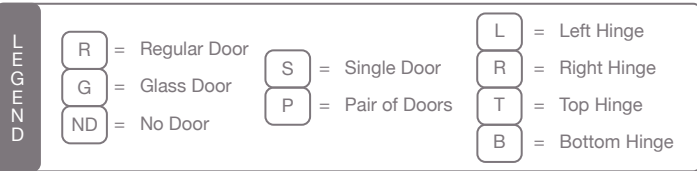


[illegible]



[illegible]



[illegible]



## FILLERS AND FINISHED ENDS

FUNTIME  
EZ-ORDER FORM

\*NOTE: Assign fillers and finished ends to the proper cabinet by entering the LINE # with the corresponding cabinet order from the previous pages (See example below).  
Please also specify which side of the cabinet a filler or finished end will be on.

	PRODUCT #	WIDTH	HEIGHT	DEPTH	LINE #	FINISHED END PLACEMENT	
						RIGHT	LEFT
EX.	BASE - FE	36"	34 1/2"	24 7/8"	EX	<input type="checkbox"/>	<input checked="" type="checkbox"/>
55.						<input type="checkbox"/>	<input type="checkbox"/>
56.						<input type="checkbox"/>	<input type="checkbox"/>
57.						<input type="checkbox"/>	<input type="checkbox"/>
58.						<input type="checkbox"/>	<input type="checkbox"/>
59.						<input type="checkbox"/>	<input type="checkbox"/>
60.						<input type="checkbox"/>	<input type="checkbox"/>
61.						<input type="checkbox"/>	<input type="checkbox"/>
62.						<input type="checkbox"/>	<input type="checkbox"/>
63.						<input type="checkbox"/>	<input type="checkbox"/>
64.						<input type="checkbox"/>	<input type="checkbox"/>
65.						<input type="checkbox"/>	<input type="checkbox"/>
66.						<input type="checkbox"/>	<input type="checkbox"/>
67.						<input type="checkbox"/>	<input type="checkbox"/>
68.						<input type="checkbox"/>	<input type="checkbox"/>
69.						<input type="checkbox"/>	<input type="checkbox"/>
70.						<input type="checkbox"/>	<input type="checkbox"/>
71.						<input type="checkbox"/>	<input type="checkbox"/>



**CABINET LIGHTING**

LINE #	INTERIOR LIGHTING	EXTERIOR LIGHTING	LINE #	INTERIOR LIGHTING	EXTERIOR LIGHTING

**LIGHTING COLOR TEMPERATURE**

2700K	3000K	3600K
<input type="checkbox"/>	<input type="checkbox"/>	<input type="checkbox"/>

**OVEN - MICROWAVE**

LINE #	OPENING WIDTH	OPENING HEIGHT	OPENING VERTICAL PLACEMENT

**\*IMPORTANT\***  
BE SURE TO READ THE APPLIANCE SPECIFICATIONS PROVIDED BY  
THE MANUFACTURER TO ENSURE A PROPER FIT.